




SCHINELLA.



13 Ross Street Plympton Park SA

3  2  1 

Size will surprise! Designed with style and class, this two-storey home stretches well beyond the spacious entry to showcase a modern floor-plan comprising of three living areas - a sought after feature for families, first home buyers, and investors.

With a fresh and vibrant feel, the open-plan layout maximises on space. Entertain effortlessly in the sleek kitchen complete with quality fixtures and fittings, handy dual sink, stainless steel appliances and granite stone benchtops featured throughout. Accompanied with a full-size laundry and extra storage space.

Spacious accommodation is offered with three bedrooms on the upper level. Large master bedroom featuring a deep

Type : House
Building Size : 207 sqm
View : <https://www.schinellaproperty.com.au/7581868>



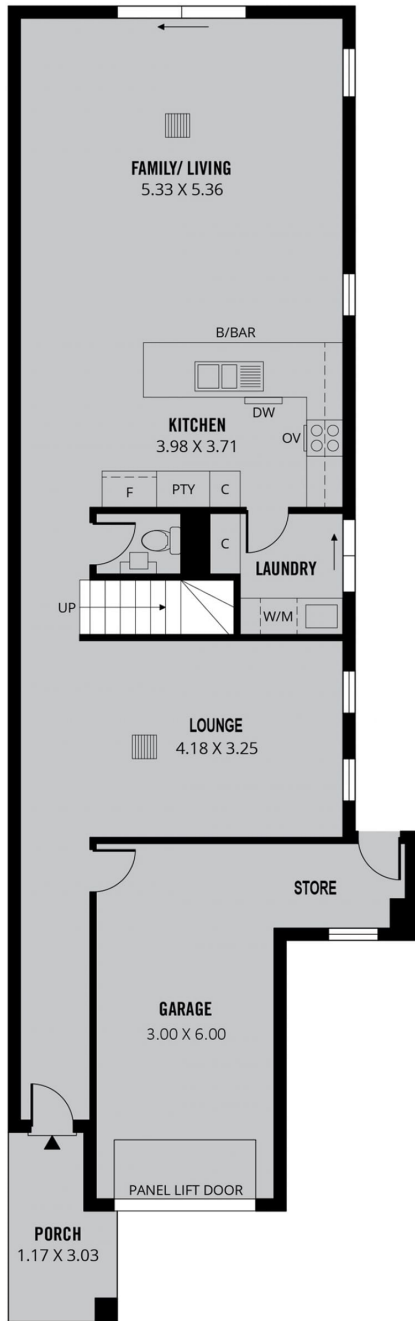
Marco Schinella
08 8294 4484

[For full version visit the website](https://www.schinellaproperty.com.au)

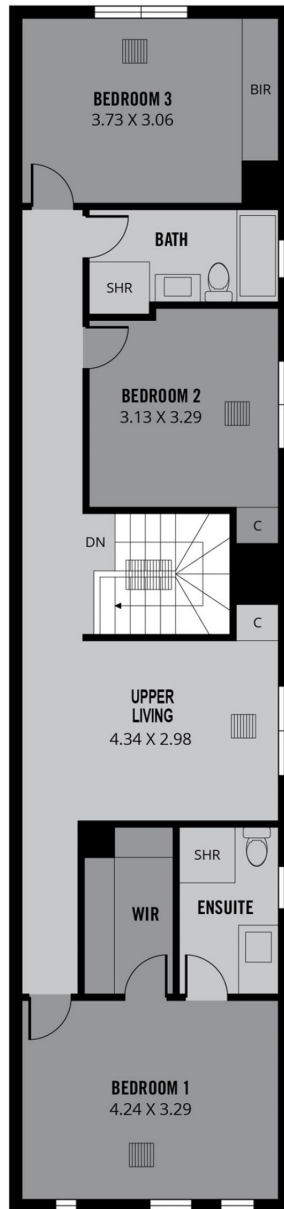
<https://www.schinellaproperty.com.au>



COURTYARD ENTERTAINING



GROUND FLOOR



FIRST FLOOR

207m²

TOTAL

179m²

Living

5m²

Porch

23m²

Garage

