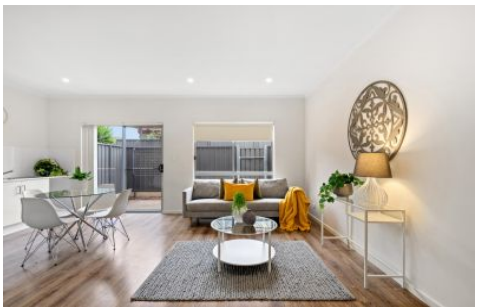


SCHINELLA.



3/42 Sunningdale Drive Christie Downs SA

3  1  2 

A great opportunity to enter the market with this stylish double Storey home offering contemporary living at its best. Located in a lovely street in this popular southern seaside location.

Ideal for first home buyers, investors or busy professionals looking for a cosmopolitan lifestyle just moments from the beach.

The townhouse consists of 3 bedrooms plus study, Jack and Jill bathroom on the upper level, as well as powder room servicing the ground level. Enter your home directly via the secure internal access from the garage.

Beautiful floating floors grace the lower level of the home,

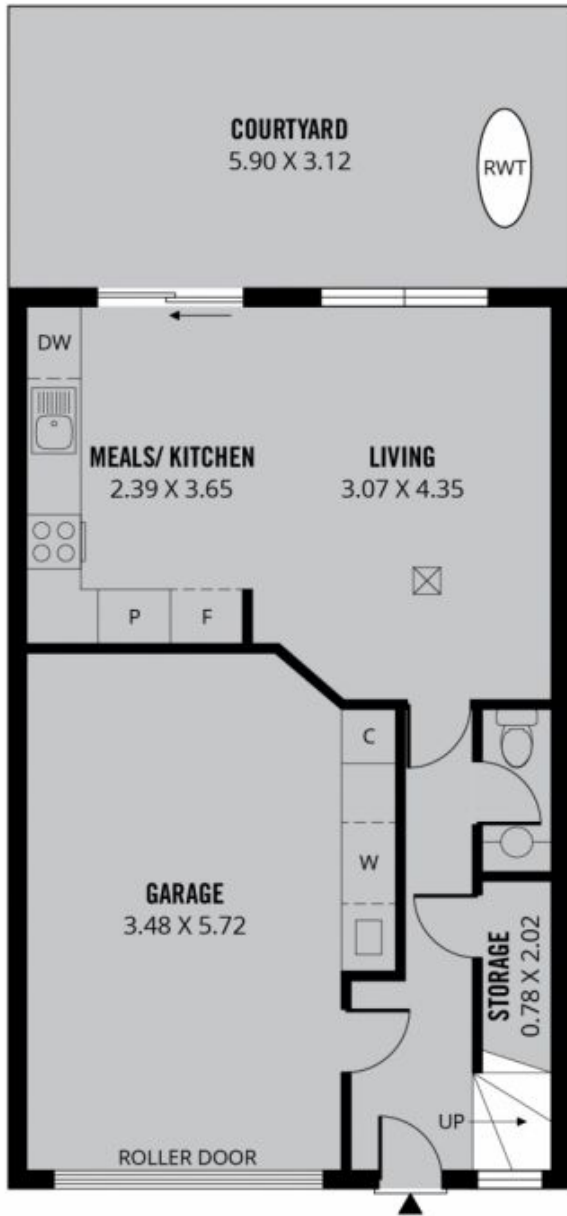
[For full version visit the website](https://www.schinellaproperty.com.au)

Type : House
Price : \$ 437,500
Building Size : 97 sqm
Land Size : 123 sqm
View : <https://www.schinellaproperty.com.au/7550337>

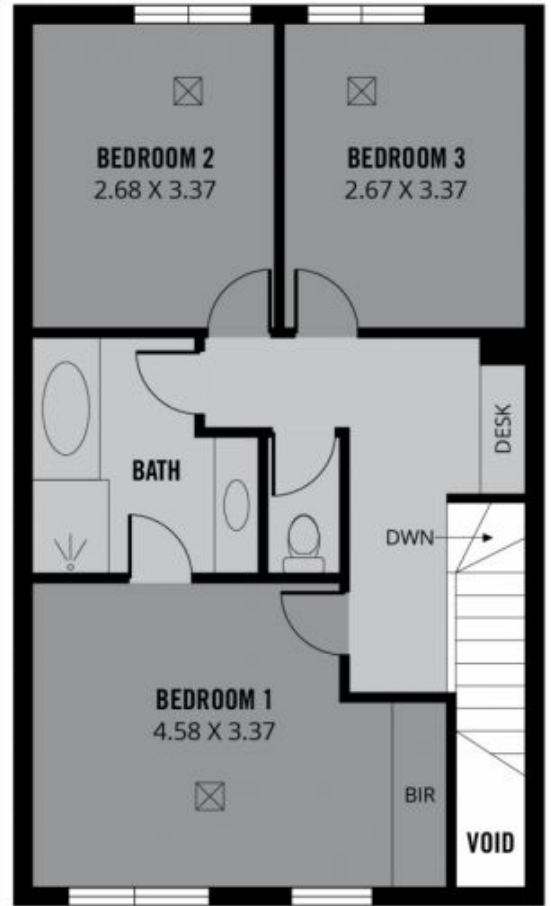


Jennifer Wilson-Gage
08 8294 4484

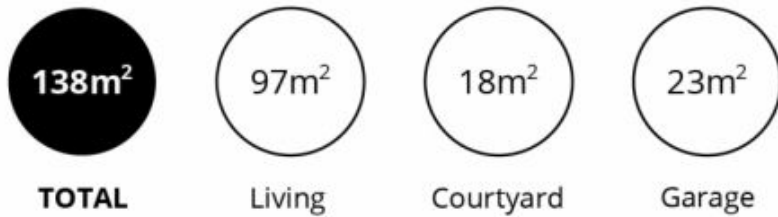
<https://www.schinellaproperty.com.au>



LOWER LEVEL



UPPER LEVEL



Scale in metres. This drawing is for illustration purposes only. All measurements are approximate and details intended to be relied upon should be independently verified. Produced by **The Fotobase Group**