

SCHINELLA.



24A Freda Street Netley SA

4 3 4

Embracing architectural design with a wide street scape, this custom-built home sits on a prime corner allotment and redefines luxury entertaining.

Inside displays the perfect balance of function and form with multiple living zones across an impressive layout.

The ground floor is a fine example of contemporary open plan living with exceptional craftsmanship. A towering entry void sets high standards with designer pendant lighting and feature staircase. Quality travertine tiled flooring, aluminium window trims and square-set cornices compliment the crisp interiors of the home.

Experience resort-style entertaining in a spectacular

[For full version visit the website](https://www.schinellaproperty.com.au)

Type : House
Price : \$ 1,300,000
Building Size : 323 sqm
Land Size : 383 sqm
View : <https://www.schinellaproperty.com.au/7505373>

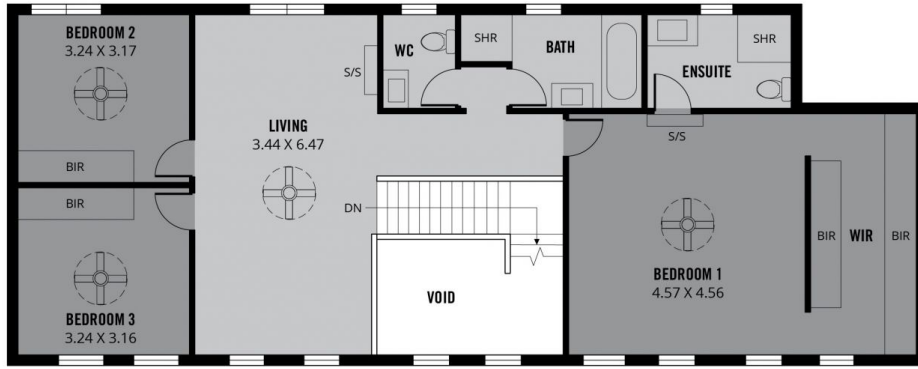


Marco Schinella
08 8294 4484

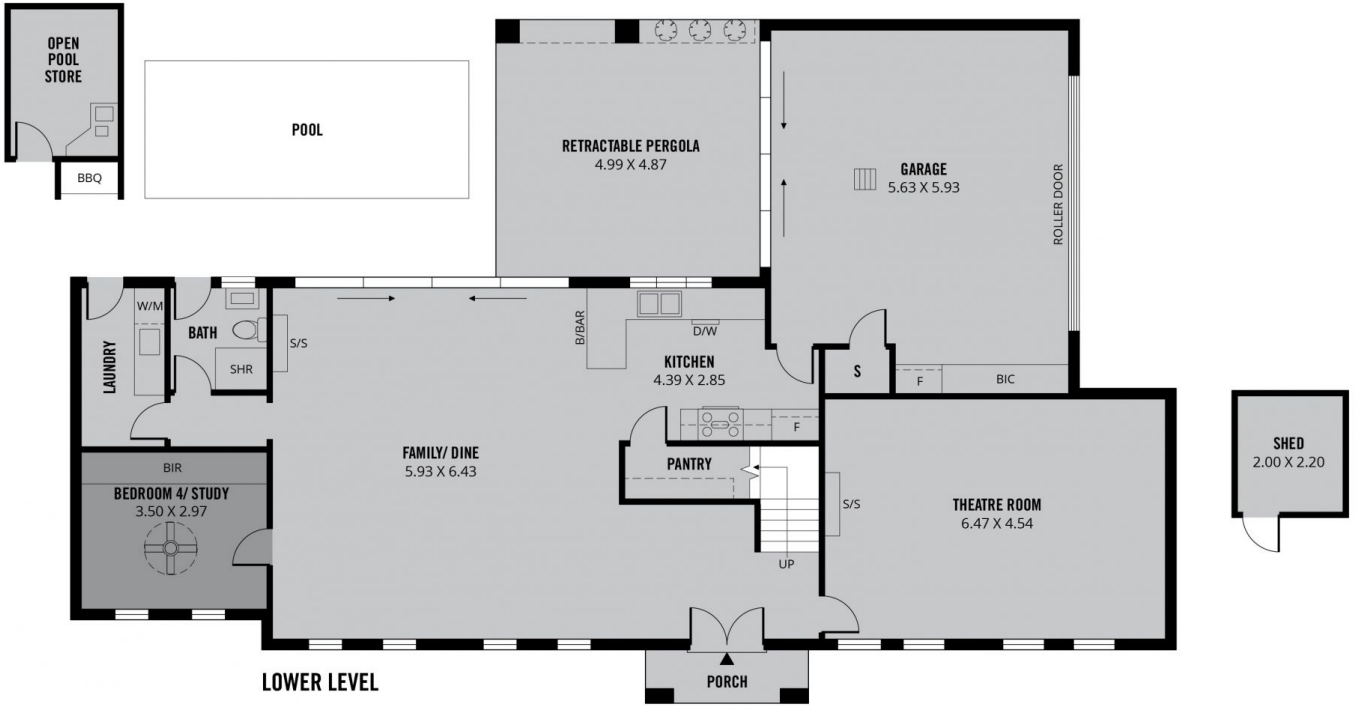


Pat Schinella
08 8294 4484

<https://www.schinellaproperty.com.au>



UPPER LEVEL



LOWER LEVEL

323m²

TOTAL



Scale in metres. This drawing is for illustration purposes only. All measurements are approximate and details intended to be relied upon should be independently verified.

Produced by **The Fotobase Group**