

# SCHINELLA.



11/465 Portrush Road Glenside SA

2  1  1 

Offering a superb lifestyle in the sought after Eastern suburbs! Stroll to Burnside Village with world-class shopping and cafes to enjoy, public transport links to the CBD.

This well-presented unit offers a private and secure entrance. Set behind electronic gate with intercom system and located on the second floor capturing scenic views of the foothills. This corner positioned unit presents with a spacious floorplan featuring two good-sized bedrooms, both with built in robes.

A neutral-toned bathroom with laundry facilities, light and bright, open plan living with modern kitchen and dining areas providing access out onto the balcony.

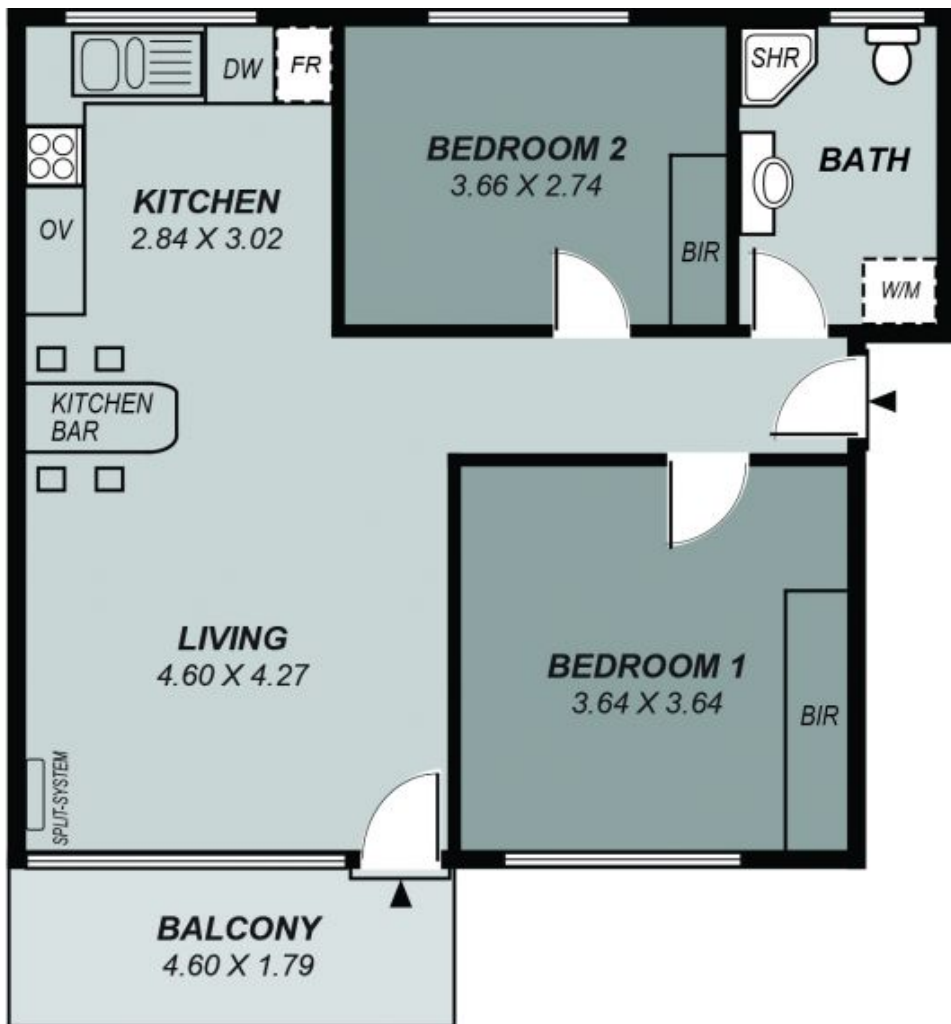
[For full version visit the website](https://www.schinellaproperty.com.au/7503346)

**Type** : Unit  
**Building Size** : 91.64 sqm  
**View** : <https://www.schinellaproperty.com.au/7503346>



**Tami Stolarski**  
8294 4484

<https://www.schinellaproperty.com.au>



*This drawing is for illustration purposes only .  
 All measurements are approximate and details intended  
 to be relied upon should be independently verified.*

Area	m <sup>2</sup>
Living:	83.67
Balcony:	8.23
<b>Total:</b>	<b>91.64</b>