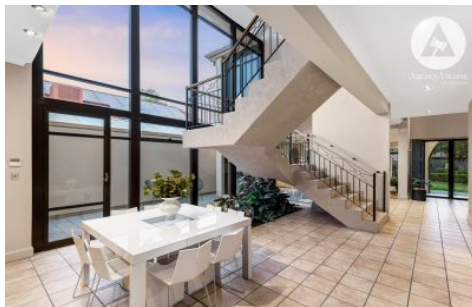





SCHINELLA.



21 McMurray Avenue Seaton SA

4  3  4 

Showcasing a grand family residence spanning across 572sqm of architectural design, immerse yourself in luxury mediterranean-inspired living.

Experience a relaxing coastal lifestyle positioned in a private cul-de-sac just moments from Grange and popular Henley Beach precinct. Drawing immediate attraction with exceptional street presence, this stand-out residence enjoys an exclusive park outlook with refreshing views.

With an immense design scale, inside offers a lavish sense of space with a host of living and entertaining zones. Classy features include lofty ceiling voids, soaring floor to ceiling windows and elegant staircase. Enhanced with sandy tones throughout, the quality timber kitchen exudes

[For full version visit the website](https://www.schinellaproperty.com.au/7471853)

Type : House
Price : \$ 1,800,000
Land Size : 693 sqm
View : <https://www.schinellaproperty.com.au/7471853>

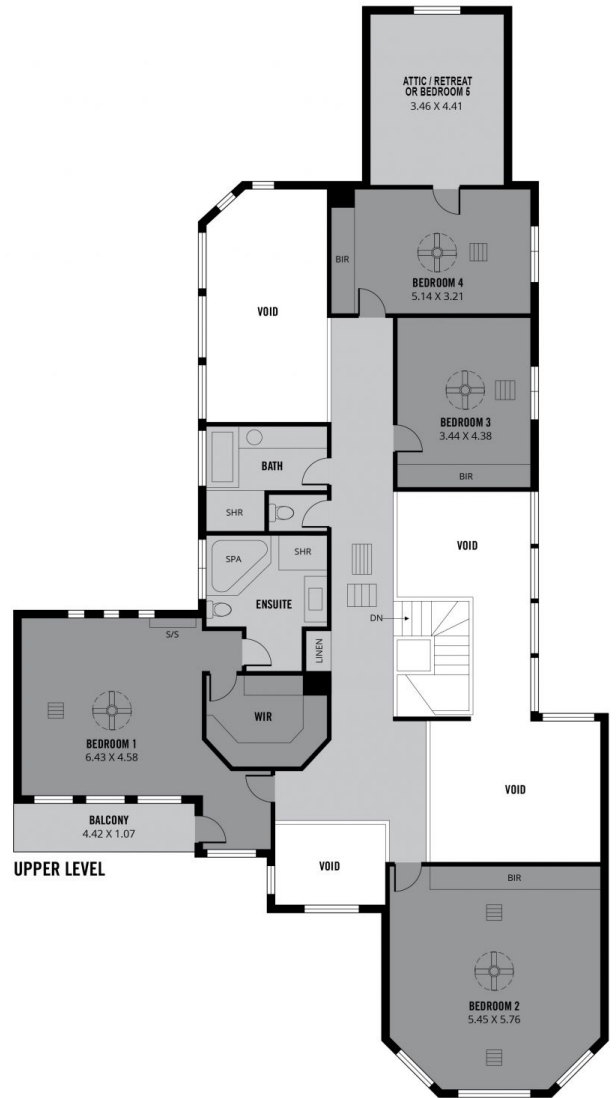


Pat Schinella
08 8294 4484



Marco Schinella
08 8294 4484

<https://www.schinellaproperty.com.au>



572m ²	470m ²	20m ²	41m ²	36m ²	5m ²
TOTAL	Living	Workshop/ Shed	Double Garage	Porch/ Verandah	Balcony

Scale in metres. This drawing is for illustration purposes only. All measurements are approximate and details intended to be relied upon should be independently verified.