

# SCHINELLA.



**15/8 Walter Avenue Mitchell Park SA**

3 2 2

Just two-year young, this modern townhouse is designed for contemporary living. Perfect for those with a busy lifestyle wanting an easy-care home in a popular re-developed location.

An easy commute to the CBD with train stop nearby and walking distance to Park Holme Shopping centre with eateries. Central to Flinders University and Hospital, Westfield Shopping Centre and Glenelg Beach.

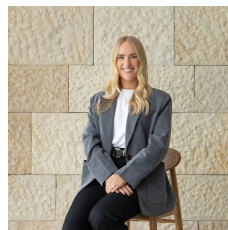
WITH QUALITY FIXTURES, THIS HOME FEATURES:

- Spacious entrance with room for a study nook
- Open plan living
- Stylish kitchen with dishwasher, stone bench-tops, oven

[For full version visit the website](https://www.schinellaproperty.com.au/7463016)

**Type** : Townhouse

**View** : <https://www.schinellaproperty.com.au/7463016>



**Renee Jackson**  
8294 4484



**DeArna Schinella**  
08 8294 4484

<https://www.schinellaproperty.com.au>