

SCHINELLA.



644 Anzac Highway Glenelg East SA

4  2  4 

Take your lifestyle to the next level with this brand-new, custom-built home, blending modern luxury with the best of beachside living. Just a short stroll from Glenelg Beach and lively Jetty Road, this stunning residence offers the ultimate coastal lifestyle.

Spanning over 300sqm of quality open plan living, this home is designed for both elegance and functionality. The open-plan layout is complemented by a soft 'greige' palette of finishes, creating a sophisticated and serene atmosphere throughout. Every detail has been carefully considered.

Set back privately from the street, the home focuses on family living and seamless entertaining. Featuring four

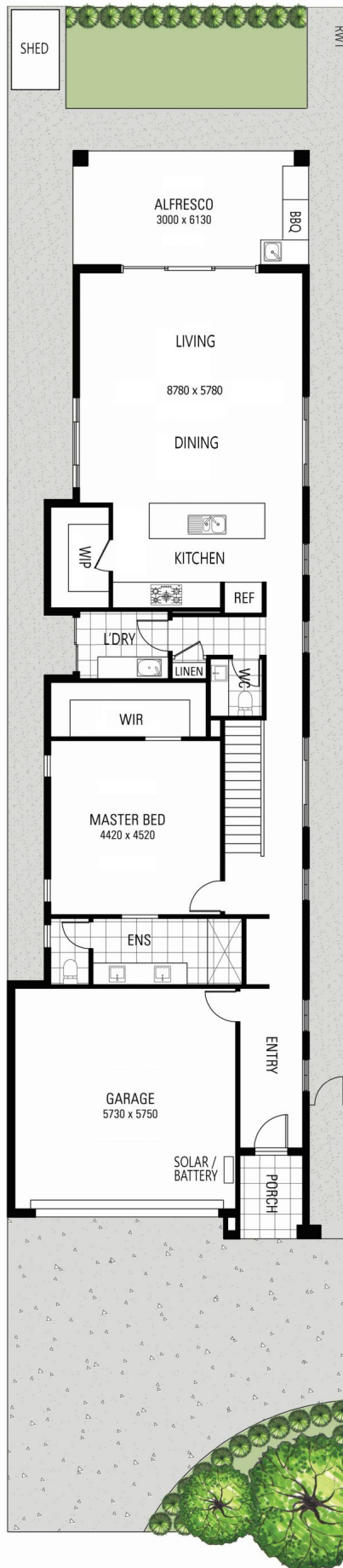
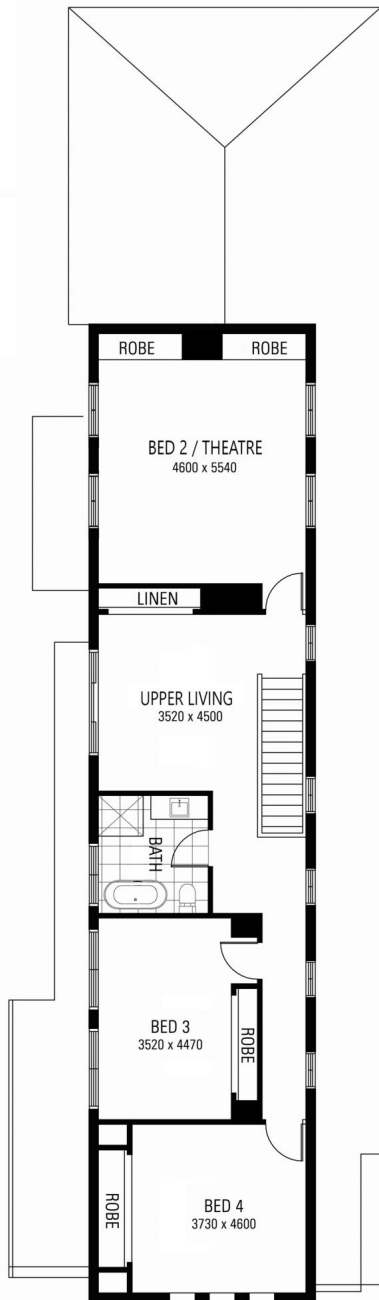
[For full version visit the website](https://www.schinellaproperty.com.au)

Type : House
Price : \$ 1,520,000
Building Size : 302 sqm
Land Size : 362 sqm
View : <https://www.schinellaproperty.com.au/7308648>



Marco Schinella
08 8294 4484

<https://www.schinellaproperty.com.au>



302m²

TOTAL FLOOR AREA

362m²

LAND SIZE

Floorplan for illustration purposes only, measurements are approximate. All interested parties should rely upon independent advice to verify the information displayed.