



# SCHINELLA.



## 230 Railway Terrace Taperoo SA

3  1  1 

Positioned just minutes from the beach and close to transport links, this solid family home offers spacious living on a roomy yet easy-care allotment. With large rooms, high ceilings and an oversized outdoor entertaining space, it represents value buying in a rapidly appreciating location.

Featuring three large bedrooms, and a formal lounge with gas heater and air-conditioner. Across the centre of the home is the bright kitchen with adjoining dining area, and at the rear - a separate bathroom, laundry and WC.

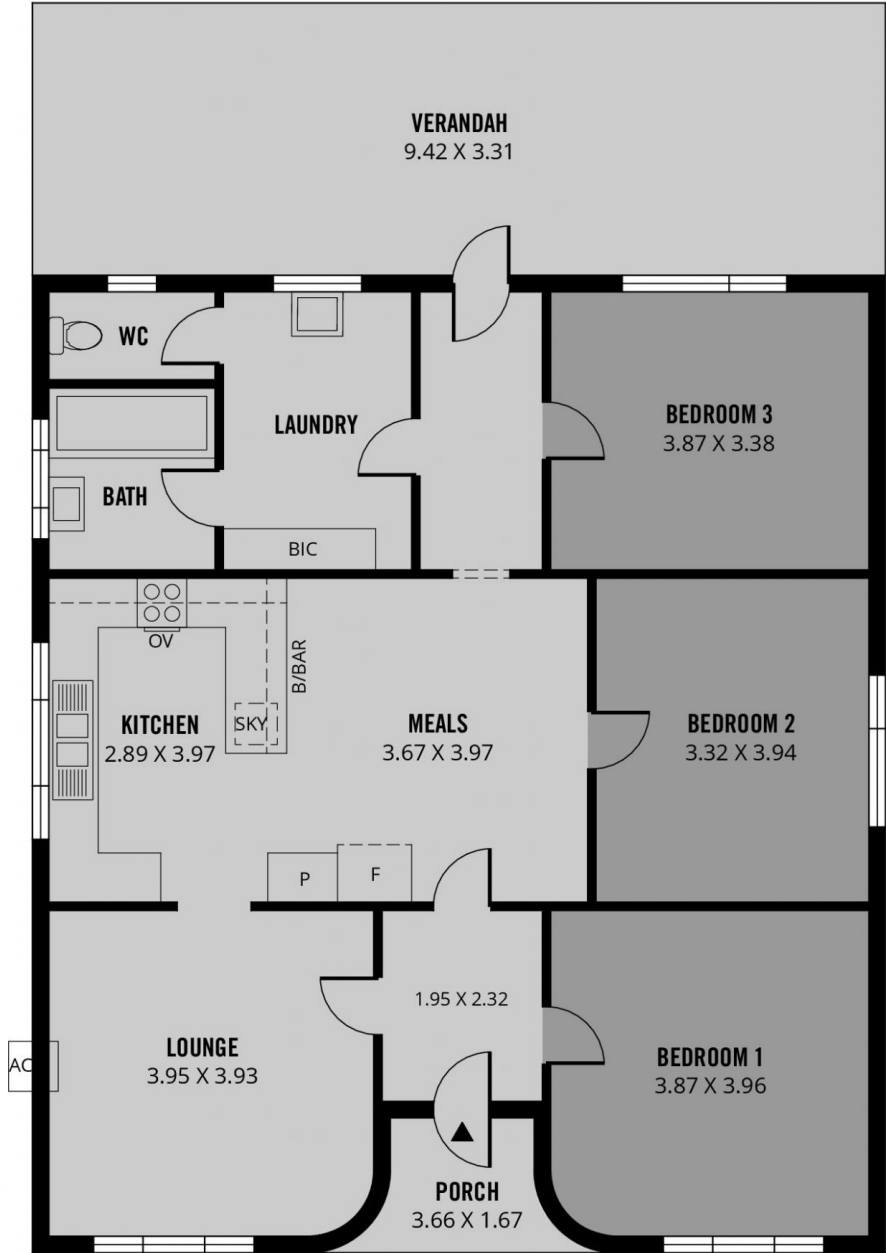
Set on an allotment of approximately 311sqm there is room for the the kids to play with a large, securely fenced front yard, and out the back the huge verandah is the perfect place to entertain all year round.

[For full version visit the website](https://www.schinellaproperty.com.au/7276749)

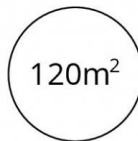
**Type** : House  
**Price** : \$ 455,000  
**Land Size** : 311 sqm  
**View** : <https://www.schinellaproperty.com.au/7276749>



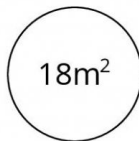
**Damian Popowycz**  
0413 026 026



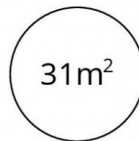
**TOTAL**



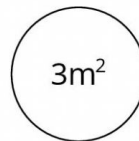
Living



Carport



Verandah



Porch



Scale in metres. This drawing is for illustration purposes only. All measurements are approximate and details intended to be relied upon should be independently verified.

Produced by **The Fotobase Group**