


SCHINELLA.



34 Dudley Avenue Daw Park SA

4  2  3 

This elegant home is situated in the popular suburb of Daw Park, just a 12-minute drive from Adelaide CBD. Offering 3 bedrooms, study/4th bedroom and 2.5 bathrooms. This lovely home offers the lifestyle you are looking for.

Situated on a generous approx. 500sm² this home offers a clever and flexible floorplan to cater for your family's needs. The property is overflowing with modern fixtures and fittings, that have been perfectly executed throughout.

Timeless and stunning floating floors flow throughout the living areas of the home. Neutral toned carpets have been chosen for the bedrooms of the home.

The design of the home has been well thought out with an

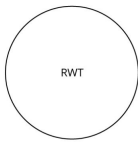
[For full version visit the website](https://www.schinellaproperty.com.au/72538)

Type : House
Land Size : 500 sqm
View : <https://www.schinellaproperty.com.au/72538>
28

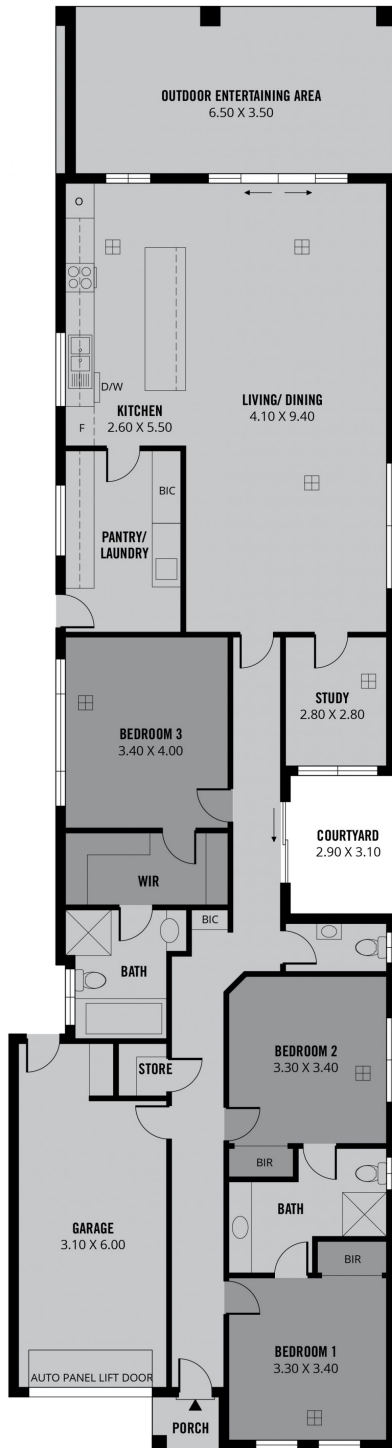


Jennifer Wilson-Gage
08 8294 4484

<https://www.schinellaproperty.com.au>



(NOT ACTUAL LOCATION)



214m²

TOTAL

165m²

Living

2m²

Porch

20m²

Garage

4m²

Garden Shed

23m²

Outdoor Ent. Area

Scale in metres. This drawing is for illustration purposes only. All measurements are approximate and details intended to be relied upon should be independently verified. Produced by **The Fotobase Group**