

SCHINELLA.



27 Ross Street Plympton Park SA

3 2 1

Designed with style and class, this two-storey home stretches well beyond the spacious entry to showcase a modern floor-plan comprising of three living areas - a sought after feature that will cater for families, first home buyers, and investors.

The size is guaranteed to surprise. With a fresh and vibrant feel, the open-plan layout maximises on space. Entertain effortlessly in the sleek kitchen complete with quality fixtures and fittings, handy dual sink, stainless steel appliances and granite stone benchtops featured throughout. Accompanied with a full-size laundry and extra storage space.

Spacious accommodation is offered with three bedrooms

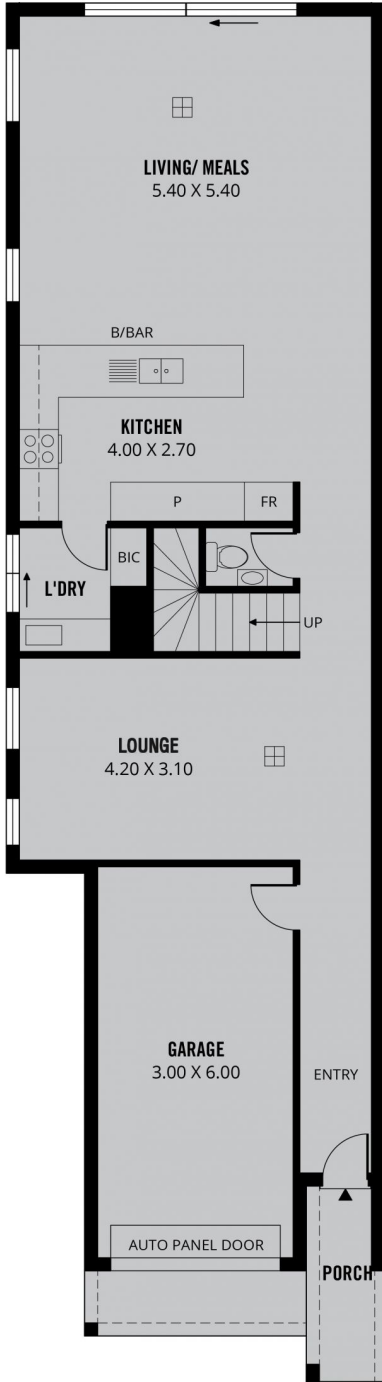
[For full version visit the website](https://www.schinellaproperty.com.au/7210709)

Type : House
Price : \$ 685,000
Building Size : 201 sqm
View : <https://www.schinellaproperty.com.au/7210709>

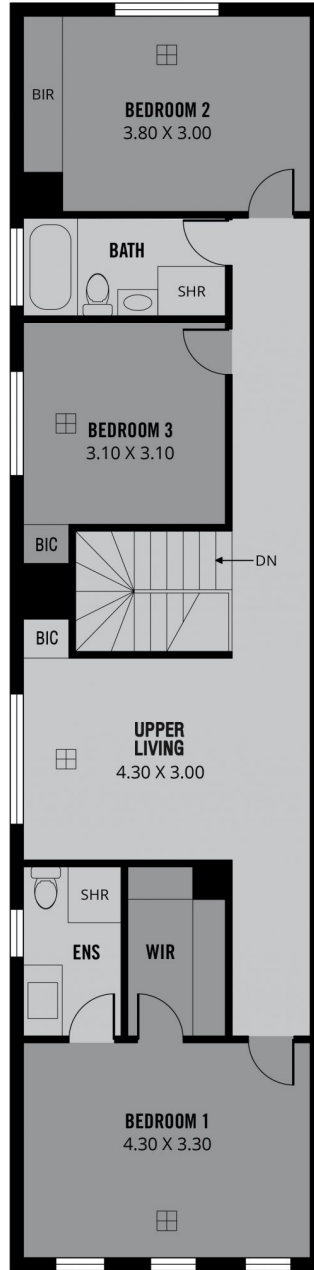


Marco Schinella
08 8294 4484

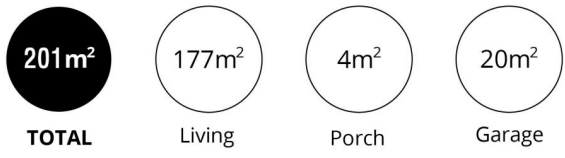
COURTYARD ENTERTAINING



LOWER LEVEL



LOWER LEVEL



Scale in metres. This drawing is for illustration purposes only. All measurements are approximate and details intended to be relied upon should be independently verified.