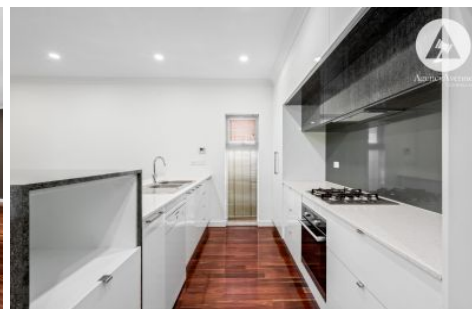


SCHINELLA.



2B Edwards Avenue Park Holme SA

3  2  2 

Set in a private cul-de-sac location with convenient easy access to Park Holme Shopping centre, local cafes, public transport and close by Westfield Marion. This beautiful home is perfectly suited to professional couples, downsizers or those looking for a low-maintenance family home.

With bright modern tones, the front entrance flows through to the impressive open-plan living, kitchen and dining area with modern downlights and striking timber floors throughout.

The desirable kitchen features quality caesarstone benchtops with island bench, ample storage with a large pantry, a newly fitted gas stovetop, electric oven and a

Type : House

View : <https://www.schinellaproperty.com.au/7180752>



DeArna Schinella
08 8294 4484



Renee Jackson
8294 4484

[For full version visit the website](https://www.schinellaproperty.com.au)

<https://www.schinellaproperty.com.au>