

# SCHINELLA.



## 6a Jarman Terrace Flinders Park SA

3 2 2

Exuding style and sophistication, and perfect for family living, this brand new residence is perfectly positioned just metres to Torrens Linear Park.

Spread over two luxurious levels, this home offers multiple living spaces and open entertaining areas, both inside and out. The lower level features a large entry hall, two bedrooms (both with built-in wardrobes), luxurious family bathroom, and an under-stair storage/wine cellar.

The bright kitchen with stone benchtops and picture-window splashback has a butler's pantry, gas cooktops and dishwasher, and overlooks the open plan living and dining area. This area in turn opens to the undercover alfresco space - perfect for combining your indoor and outdoor entertaining.

[For full version visit the website](https://www.schinellaproperty.com.au/71780)

**Type** : House  
**Price** : \$ 1,052,500  
**Land Size** : 355 sqm  
**View** : <https://www.schinellaproperty.com.au/71780>  
75



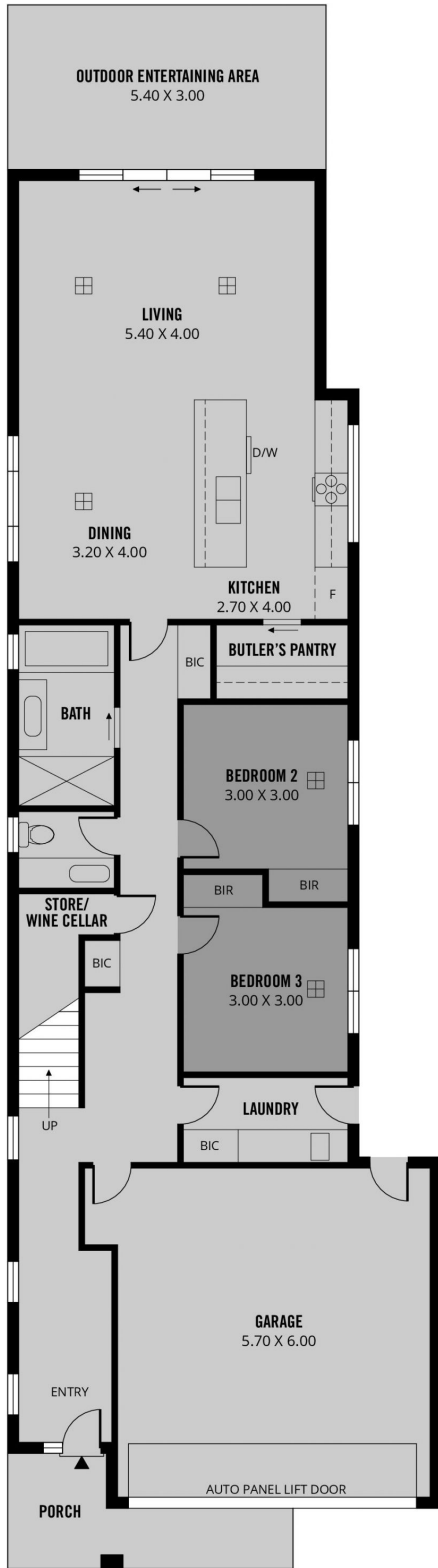
**Damian Popowycz**  
0413 026 026



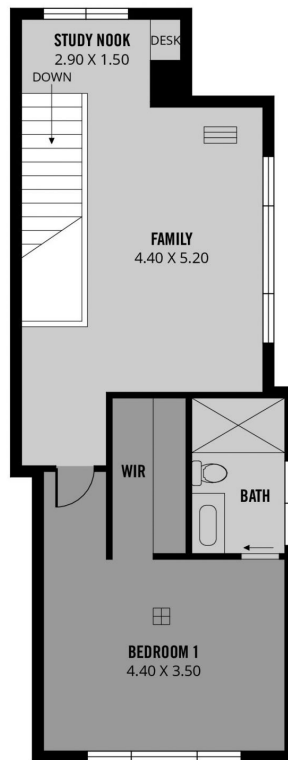
**Mladen Djuric**  
0432259123



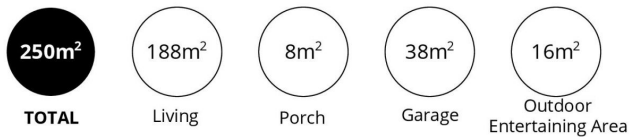
(NOT IN ACTUAL LOCATION)



LOWER LEVEL



UPPER LEVEL



Scale in metres. This drawing is for illustration purposes only. All measurements are approximate and details intended to be relied upon should be independently verified.

Produced by The Fotobase Group