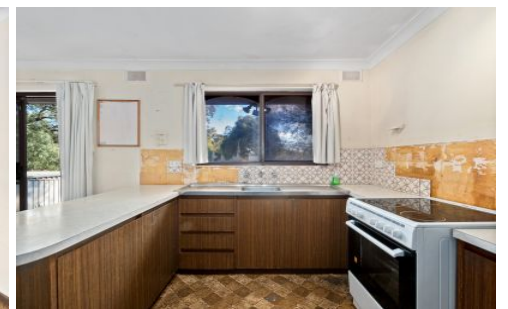


# SCHINELLA.



1227 Lower North East Road Hope Valley SA

3 2 2

Set on a huge allotment of approximately 900sqm, this family home may not be dressed in her Sunday best, but is ready and waiting for someone to renovate and repair and add instant value to their investment.

Featuring three bedrooms (main with ensuite and built-in wardrobes, bedroom with BIR), large formal lounge, original kitchen with adjoining dining, main bathroom and separate laundry. The home also has ducted evaporative air-conditioning.

The kitchen and dining enjoy elevated views over the huge yard - a blank canvas with room to extend the home or landscape to create your own private oasis.

[For full version visit the website](https://www.schinellaproperty.com.au/7160007)

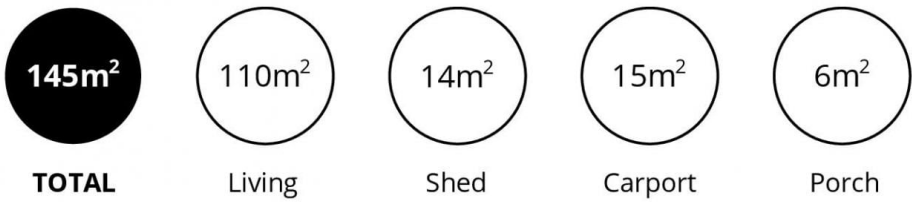
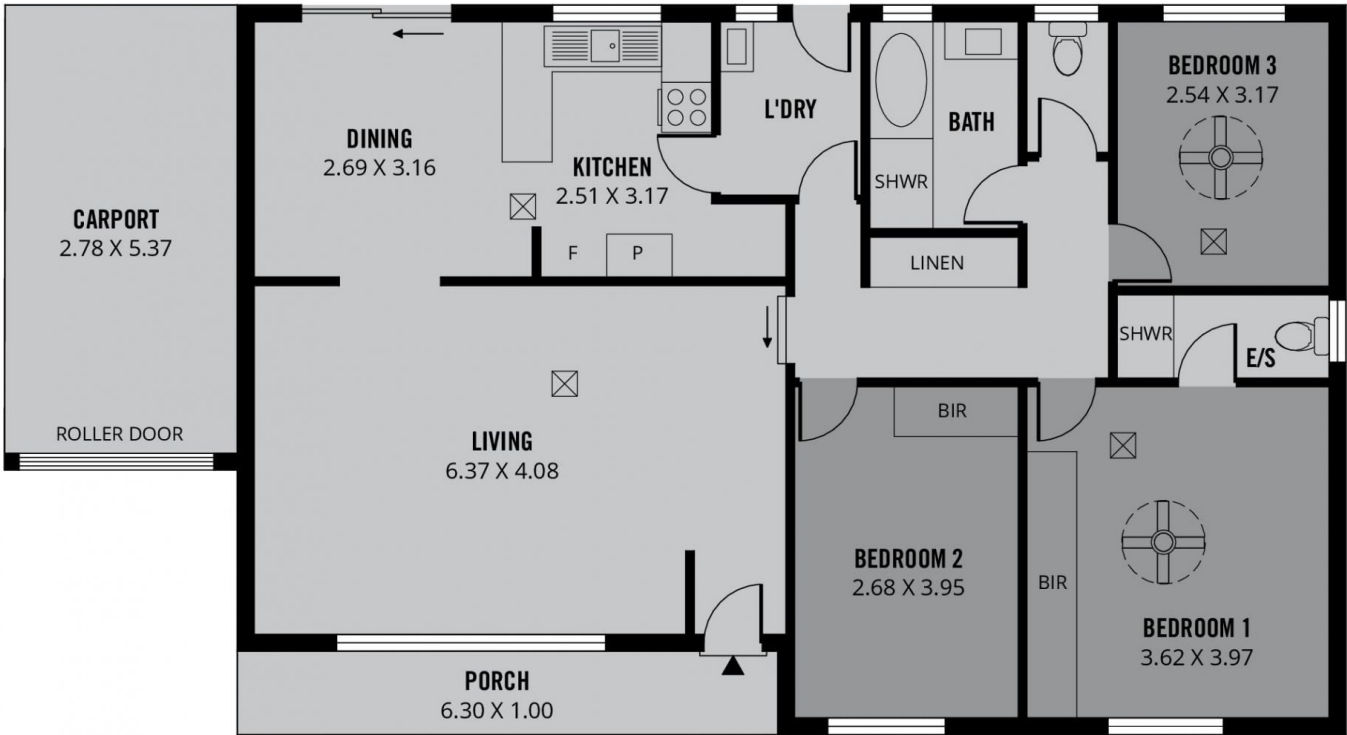
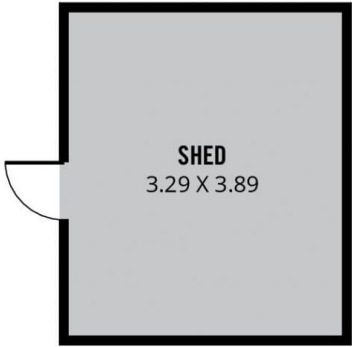
**Type** : House  
**Price** : \$ 405,000  
**Land Size** : 900 sqm  
**View** : <https://www.schinellaproperty.com.au/7160007>



**Damian Popowycz**  
0413 026 026



**Mladen Djuric**  
0432259123



Scale in metres. This drawing is for illustration purposes only. All measurements are approximate and details intended to be relied upon should be independently verified.

Produced by **The Fotobase Group**