




# SCHINELLA.



5/25 Daws Road Mitchell Park SA

2  1  1 

Surprisingly spacious inside, this ground-floor unit ticks all the boxes. Desirably set-back from the road within a well-maintained group, the floorplan offers a good-size, light-filled lounge room that flows into the modern kitchen with eat-in meals area.

The kitchen is complete with stainless steel appliances, brand new dishwasher, gas stove top, range hood and electric oven. Plenty of built-in cupboards, bench space and a good-size pantry.

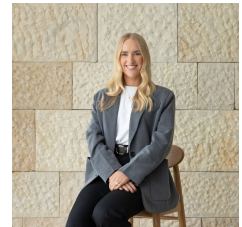
Two spacious bedrooms, both include built-in robes and are located across the hall from the large bathroom with shower recess, vanity and toilet. The bathroom also includes room for your laundry facilities - A huge bonus!

**Type** : Unit

**View** : <https://www.schinellaproperty.com.au/7131707>



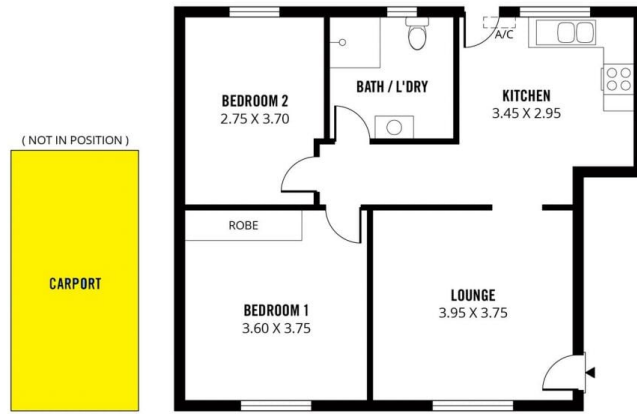
**DeArna Schinella**  
08 8294 4484



**Renee Jackson**  
8294 4484

[For full version visit the website](https://www.schinellaproperty.com.au)

<https://www.schinellaproperty.com.au>



Scale in metres. This drawing is for illustration purposes only. All measurements are approximate and details intended to be relied upon should be independently verified.

Produced by **The Fotobase Group**