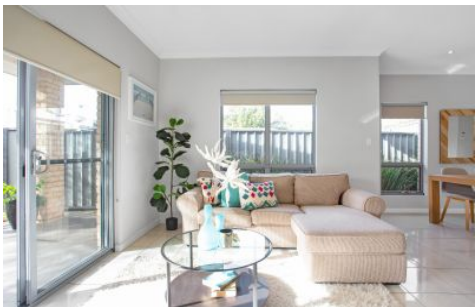


SCHINELLA.



47 Kent Avenue Warradale SA

3 2 2

Stunning home with large 2nd living area.

This much-loved home is nestled beautifully amongst other quality homes in the popular suburb of Warradale, where everything is at your fingertips. Easy-care living at its best.

Located just moments from local schools, parks including Hazelmere Rd dog park, Coles supermarket, Warradale Hotel, public transport and Westfield Marion, Marion Leisure centre and close to Oaklands Wetland and reserve.

With attractive street appeal this home has been lovingly cared for by its current owner. This one will be popular with many purchasers. Including the first home buyer looking for a location that is convenient for all that you could need, the

[For full version visit the website](https://www.schinellaproperty.com.au)

Type : House
Price : \$ 774,200
Building Size : 204 sqm
Land Size : 362 sqm
View : <https://www.schinellaproperty.com.au/7072373>

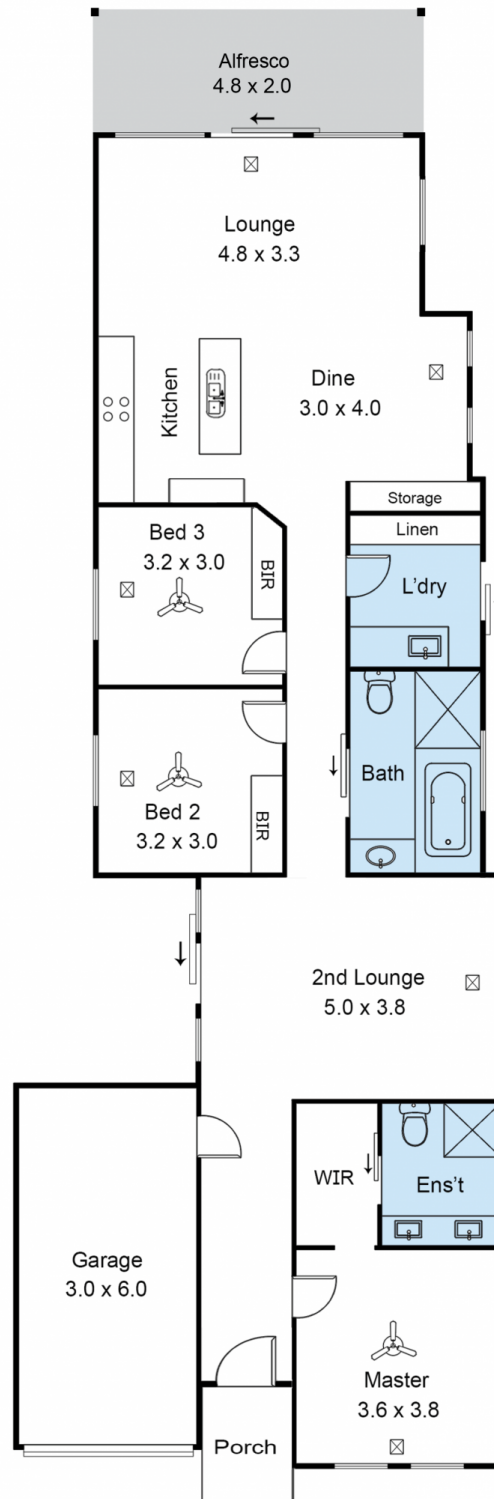


Jennifer Wilson-Gage
08 8294 4484

<https://www.schinellaproperty.com.au>

Agency Avenue

47 Kent Avenue, Warradale



- approx Living 177m²
- approx Garage 18m²
- approx Alfresco 9m²
- approx TOTAL 204m²

This drawing is for illustration purposes only. All measurements are approximate only and information to be relied upon should be independently verified. Leading Lines Photography.