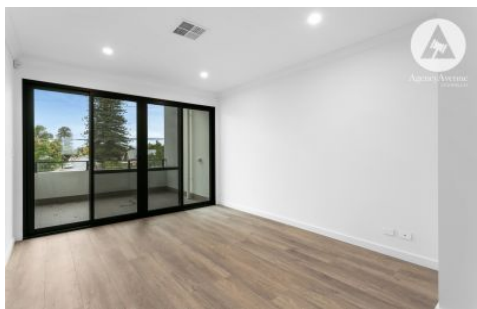


# SCHINELLA.



2/247 Anzac Highway Plympton SA

2 2 1

Brand new - this executive townhouse has been designed for contemporary living. A unique opportunity that allows your residential lifestyle to accommodate an onsite workspace - A feature that is highly sought-after today.

Perfect for professionals who work from home, the entrance floor comprises a SOHO room with kitchenette and separate powder room. A commercial-like space giving clients access from Anzac Highway. (If a workspace is not required, this flexible room can be a third bedroom or second living area - the choice is yours).

The second level contains the kitchen with dining area and lounge room with spacious balcony - All with double glaze windows, there are peaceful views overlooking the treetops

[For full version visit the website](https://www.schinellaproperty.com.au)

**Type** : House

**View** : <https://www.schinellaproperty.com.au/7019155>



**DeArna Schinella**  
08 8294 4484



**Tami Stolarski**  
8294 4484

# FLOOR PLAN

2nd Floor



1st Floor



Ground

**MAYA**  
REAL ESTATE  
Artist Impression Only

