

# SCHINELLA.



3/250 Anzac Highway Plympton SA

3 2 1

Presenting with style and sophistication, this executive townhouse is near-new with a sleek modern design that will attract the attention of professionals with a busy lifestyle.

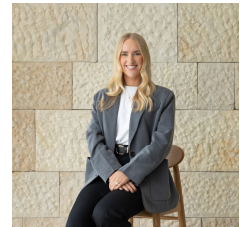
Set back from the street, this home is conveniently positioned between the City and the sea. With access to public transport, commuting into the CBD is easy. Kurralta Park Shopping precinct and local cafes and shops are all nearby.

With rooms that have maximized natural light and space, the flexible floorplan has been cleverly designed. The entrance level comprises a large bedroom with ensuite and walk-in robe. This room provides sliding door access out to the private courtyard.

**Type** : House  
**View** : <https://www.schinellaproperty.com.au/6978176>



**DeArna Schinella**  
08 8294 4484



**Renee Jackson**  
8294 4484

[For full version visit the website](https://www.schinellaproperty.com.au)

<https://www.schinellaproperty.com.au>



GROUND FLOOR



FIRST FLOOR



Scale in metres. This drawing is for illustration purposes only. All measurements are approximate and details intended to be relied upon should be independently verified. Produced by The Fotobase Group