

SCHINELLA.



7 Leven Avenue Seaton SA

3 2 4

Quality and style on display with this 2022 courtyard home sitting on a enviable 405sqm (approx) allotment. A well designed layout, covering 270sqm of floor area presents families with multiple living spaces and many different functions. Whether upgrading, upsizing or looking to downsize, this home offers contemporary living at it's finest with very little maintenance required.

Consistent shortages of material and increased cost in building coupled with the scarcity of land offerings in the area further highlight this home as the perfect 'Turn-key' solution.

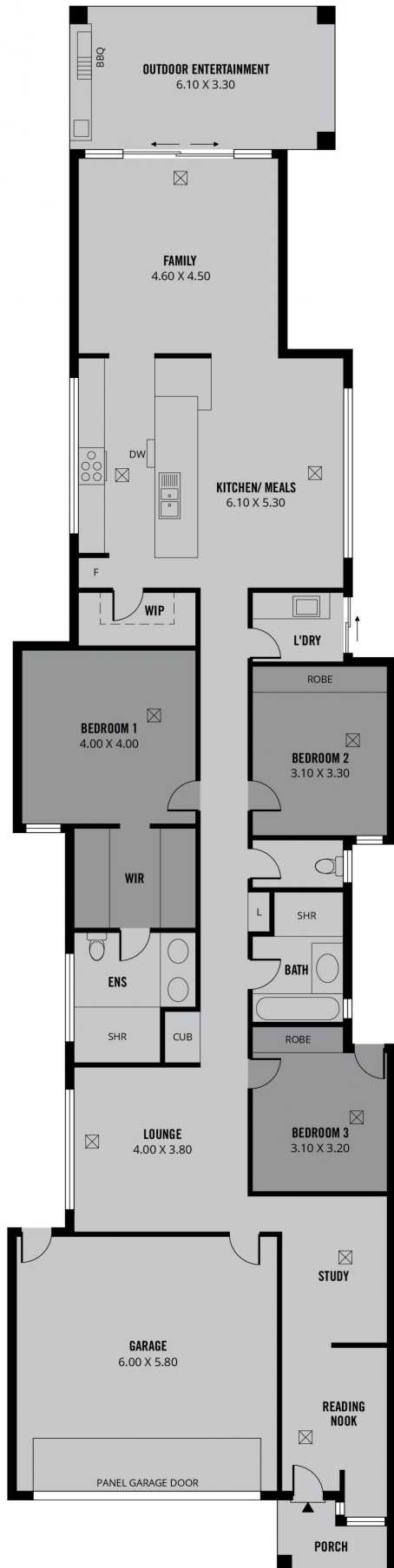
Key features;
-Spacious and light filled open plan kitchen / living / dining

[For full version visit the website](https://www.schinellaproperty.com.au)

Type : House
Price : \$ 1,005,000
Building Size : 270 sqm
Land Size : 411 sqm
View : <https://www.schinellaproperty.com.au/6931998>



Mladen Djuric
0432259123



270m²

TOTAL

201m²

Living

4m²

Porch

38m²

Garage

27m²

Outdoor
Entertainment



Scale in metres. This drawing is for illustration purposes only. All measurements are approximate and details intended to be relied upon should be independently verified. Produced by The Fotobase Group