




# SCHINELLA.



16 Ryan Avenue Woodville West SA

3  2  4 

Well-designed to accommodate all aspects of modern life, complimented with luxurious fixtures and finishes throughout, this 2022 brand-new courtyard home will delight families looking for space to grow. Will also make a fantastic low maintenance option for downsizers who won't have to compromise in home size.

**Type** : House  
**Land Size** : 378 sqm  
**View** : <https://www.schinellaproperty.com.au/6931706>

Key features;

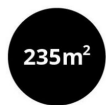
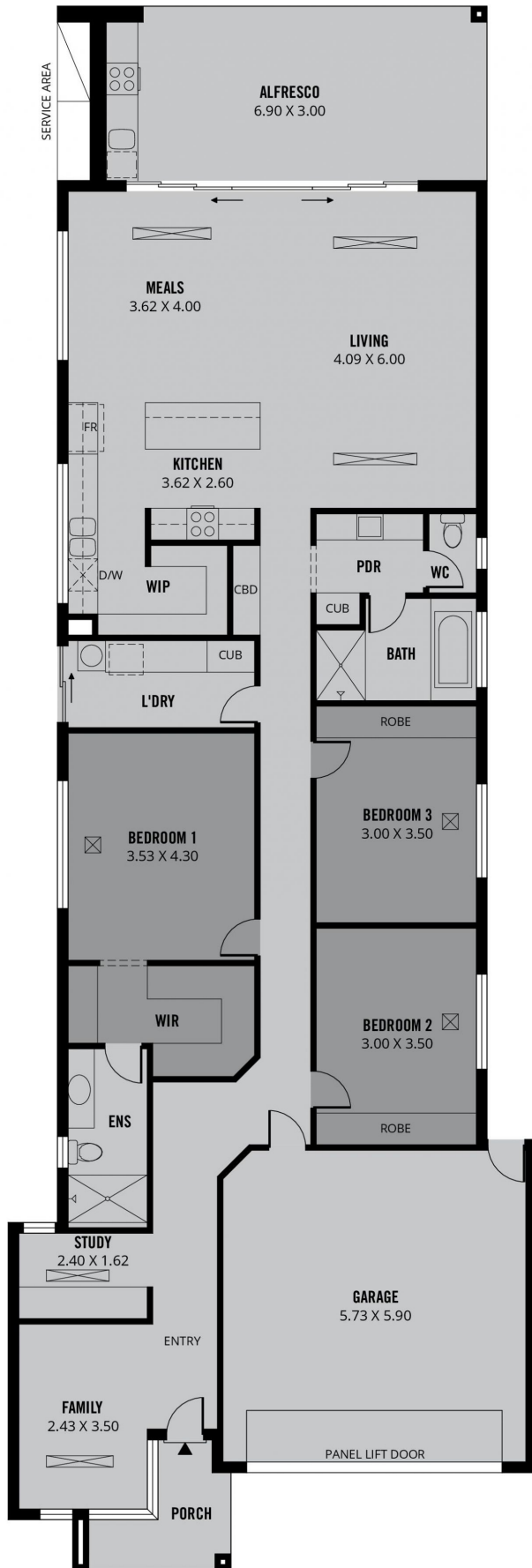
- Spacious and light filled open plan kitchen / living / dining.
- Well-designed kitchen with a walk-in pantry, featuring a tower oven & griller, gas cooktop, dishwasher, Caesarstone island bench and soft closing cabinetry.



**Mladen Djuric**  
0432259123

[For full version visit the website](https://www.schinellaproperty.com.au)

<https://www.schinellaproperty.com.au>



TOTAL



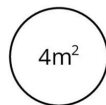
Living



Alfresco



Garage



Porch



Scale in metres. This drawing is for illustration purposes only. All measurements are approximate and details intended to be relied upon should be independently verified. Produced by **The Fotobase Group**