

SCHINELLA.



4/57-59 Wallala Avenue Park Holme SA

3 1 1

Located at the end of a small quiet group in the popular suburb of Park Holme, where everything is just a short distance away.

This three-bedroom beauty offers generous living area with reading or study nook. Perfect for the first home buyer, professional couple, downsizer or investor.

Beautiful floating floors flow throughout the property in a lovely neutral tone. Well maintained this unit will tick a lot of boxes.

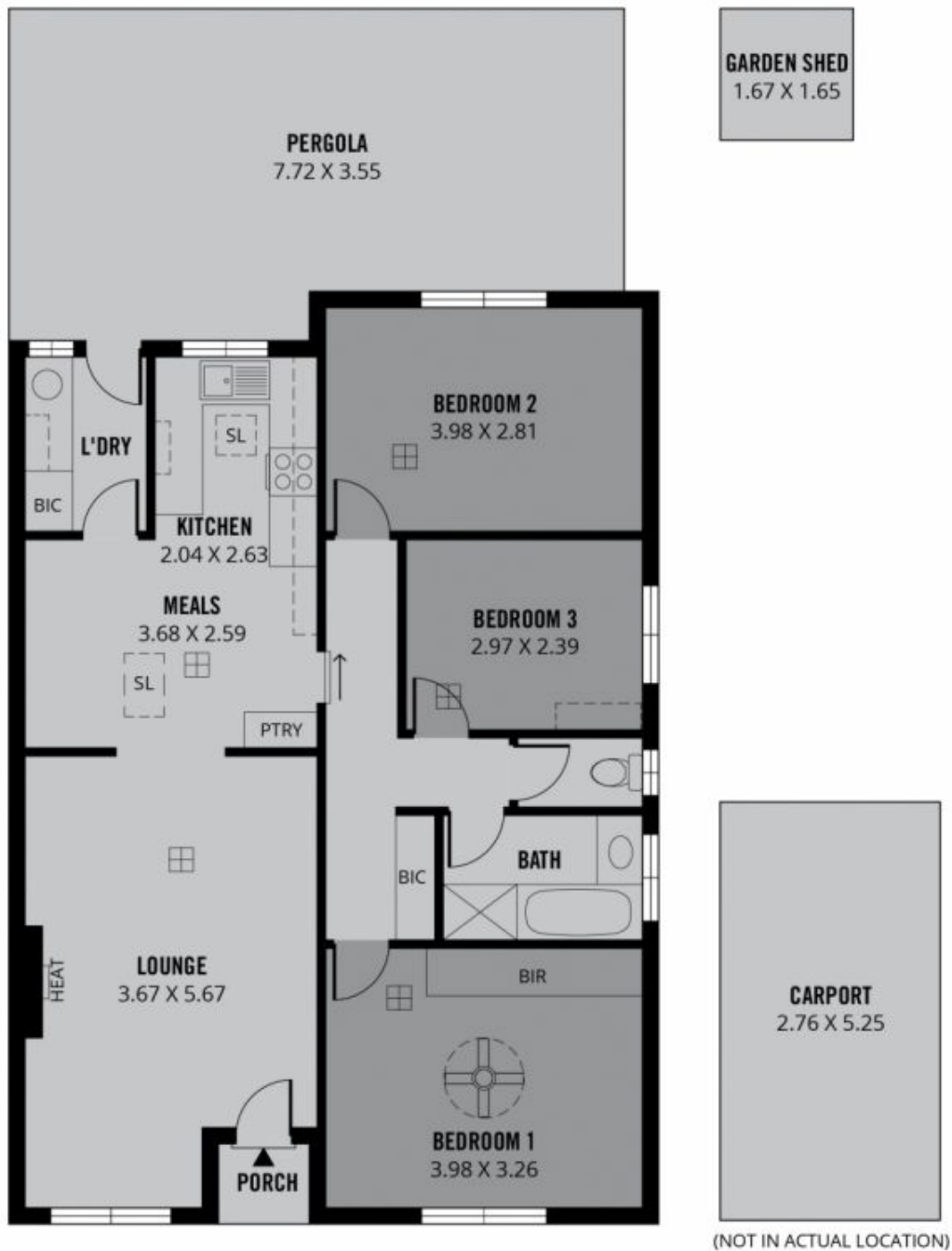
Ducted evaporative air conditioning will keep you cool throughout the summer months. Gas heating in the lounge area will allow your comfort through the winter months.

[For full version visit the website](https://www.schinellaproperty.com.au/68354)

Type : Unit
Price : \$ 445,000
Land Size : 178 sqm
View : <https://www.schinellaproperty.com.au/68354>
95



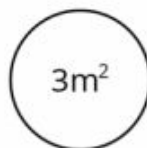
Jennifer Wilson-Gage
08 8294 4484



TOTAL



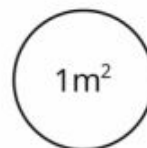
Living



Garden
Shed



Carport



Porch



Pergola



Scale in metres. This drawing is for illustration purposes only. All measurements are approximate and details intended to be relied upon should be independently verified.

Produced by **The Fotobase Group**