

SCHINELLA.



9 Elm Terrace Glenelg North SA

3 2 4

With commanding street presence and beautifully manicured gardens, this loved family residence has been immaculately maintained over the years. It is an impressive home offering something for the whole family. Parents will appreciate the great entertaining space and kids will love the direct access into the neighbouring park.

Spanning a frontage of 39m with a desirable corner position, you are greeted with electronic gates that open into the grand return driveway. A feature that gives this home 'the wow' factor.

Designed with European touches and charming glass leadlight windows and ornate ceilings, the entrance foyer oozes with class and sophistication. Featuring marble tiles,

[For full version visit the website](https://www.schinellaproperty.com.au/67548)

Type : House
Price : \$ 1,280,000
Land Size : 819 sqm
View : <https://www.schinellaproperty.com.au/67548>
86

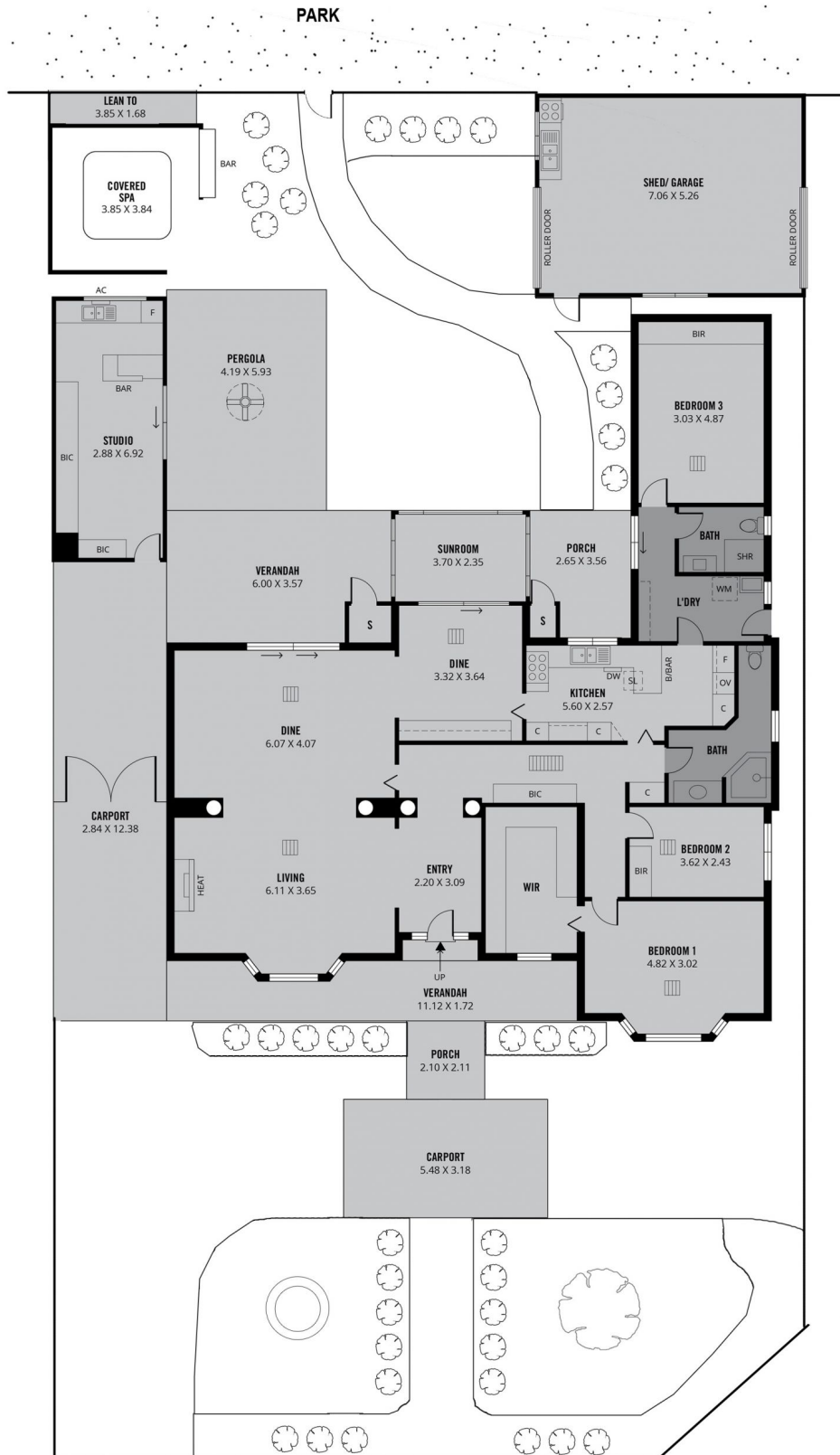


DeArna Schinella
08 8294 4484



Pat Schinella
08 8294 4484

<https://www.schinellaproperty.com.au>



SITEPLAN FOR ILLUSTRATION ONLY

Scale in metres. This drawing is for illustration purposes only. All measurements are approximate and details intended to be relied upon should be independently verified.

Produced by **The Fotobase Group**