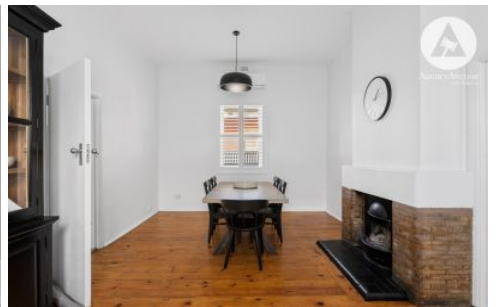


SCHINELLA.



50 Hughes Street Mile End SA

3 1 1

Retaining charming ornate features, this character style villa has been updated with modern comforts. A perfect home for couples or young families looking for an in-between home to stay. Offered with furniture, making it a convenient option.

Set in a sought-after city fringe location, the commute into the CBD is a breeze by car, public transport, or bike. Enjoy the array of cafes, shops and restaurants nearby as well as parks and reserves and within easy reach to the new Royal Adelaide Hospital.

This home opens to the spacious lounge complete with ornate fireplace and cosy lounges. The warmth of the timber floors against the neutral tones with high ceilings

Type : House

View : <https://www.schinellaproperty.com.au/6673366>



DeArna Schinella
08 8294 4484

[For full version visit the website](https://www.schinellaproperty.com.au)

<https://www.schinellaproperty.com.au>



| AREAS (Approx.) | m ² |
|-----------------|----------------|
| LIVING | 122.60 |
| VERANDAH | 8.20 |
| PERGOLA | 8.00 |
| SHED | 3.45 |
| TOTAL | 142.25 |

50 Hughes Street, Mile End