

SCHINELLA.



11 Ross Street Plympton Park SA

3  2  1 

Designed with style and class, this 2012 built home stretches well beyond the spacious entry to showcase a modern floor-plan comprising of three living areas - a sought after feature that will appeal to families, couples, and investors.

The size is guaranteed to surprise. With a warm and welcoming feel, the light-filled open-plan layout will spoil large families. Entertain effortlessly in the sleek kitchen complete with quality fixtures and fittings, handy dual sink, stainless steel appliances and granite stone benchtops featured throughout. Direct access to the full-size laundry will offer extra storage space.

Family accommodation is offered with three bedrooms

[For full version visit the website](https://www.schinellaproperty.com.au)

Type : House
Building Size : 218 sqm
View : <https://www.schinellaproperty.com.au/6605995>

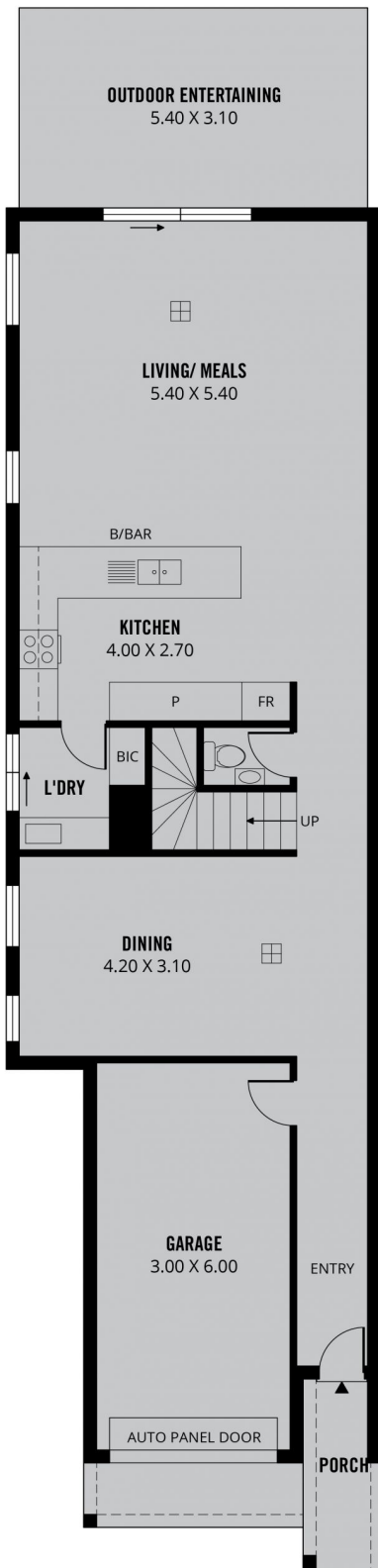


Marco Schinella
08 8294 4484

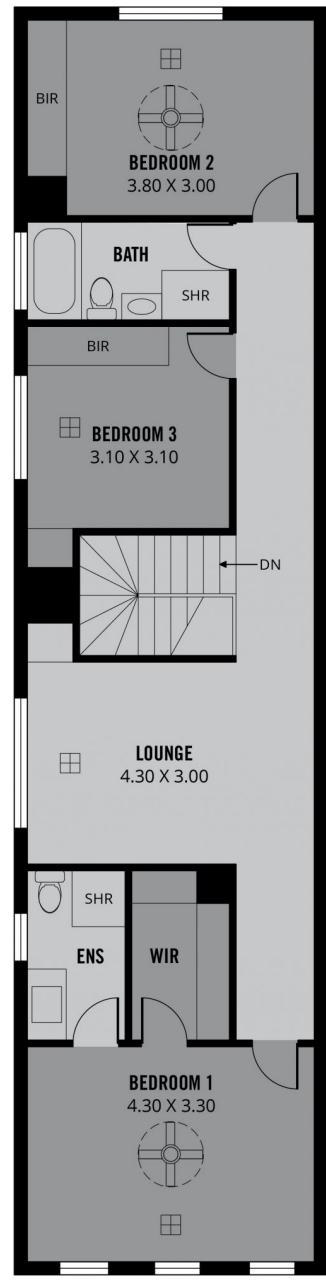


Pat Schinella
08 8294 4484

RWT



LOWER LEVEL



LOWER LEVEL

- 218m² TOTAL
- 177m² Living
- 4m² Porch
- 20m² Garage
- 17m² Outdoor Entertaining

Scale in metres. This drawing is for illustration purposes only. All measurements are approximate and details intended to be relied upon should be independently verified.