

SCHINELLA.



5 Rod Court Gulfview Heights SA

5 🛏 2 🚗 2 🚗

Price Guide: Area sales available upon request

Set on a sought-after corner allotment of some 1,210m² in a private cul-de-sac location, this charming family residence offers the perfect blend of formal and informal living and entertaining areas. Built in the 1980's, this beautifully presented home has been lovingly maintained and is ready to spoil another growing family.

With an appealing wide street frontage and return verandah with landscaped grounds, inside offers an inviting entrance into the light-filled living and dining area with cathedral style ceilings and exposed brick feature wall.

Functional in layout, the quality open-plan kitchen features

[For full version visit the website](https://www.schinellaproperty.com.au/6600553)

Type : House
Building Size : 411 sqm
Land Size : 1210 sqm
View : <https://www.schinellaproperty.com.au/6600553>

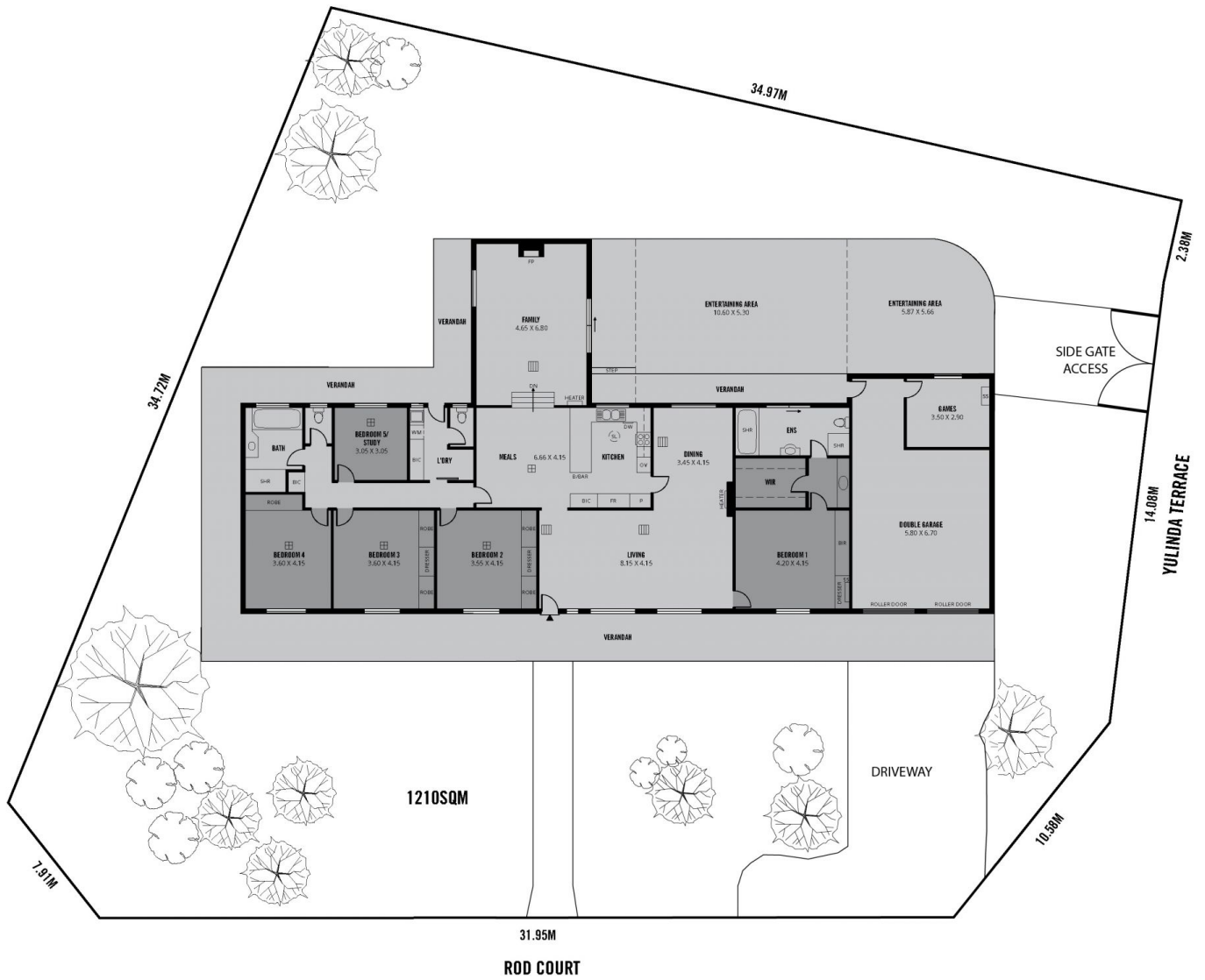


Marco Schinella
08 8294 4484



Pat Schinella
08 8294 4484

<https://www.schinellaproperty.com.au>



411m ²	274m ²	48m ²	89m ²
TOTAL	Living	Garage	Entertaining

Scale in metres. This drawing is for illustration purposes only. All measurements are approximate and details intended to be relied upon should be independently verified.

Produced by The Fotobase Group