

SCHINELLA.



6/11 Whitney Street Cheltenham SA

2  1  1 

Ideal for first home buyers or investors, this beautifully presented home unit is set towards the rear of this small, quiet group. Located near the shops and cafes at St. Clair, and close to local schools and public transport links including train and bus.

Perfectly presented throughout this property has been renovated leaving the lucky buyer nothing to do but move in and enjoy. With 2 good size bedrooms, new bathroom, renovated kitchen and an elegant lounge. The rear is ideal for entertaining with a private courtyard (with shed) covered by a verandah making it suitable for use all year round.

A great investment or live-in option in a fantastic location.

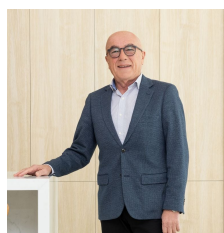
STRATA RATES - \$352/qtr

COUNCIL RATES - \$1100 p.a.

Type : Unit

Price : \$ 265,000

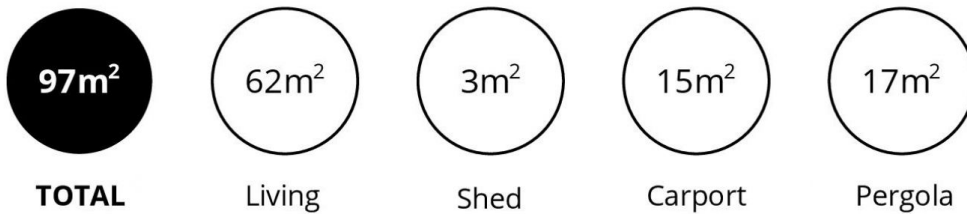
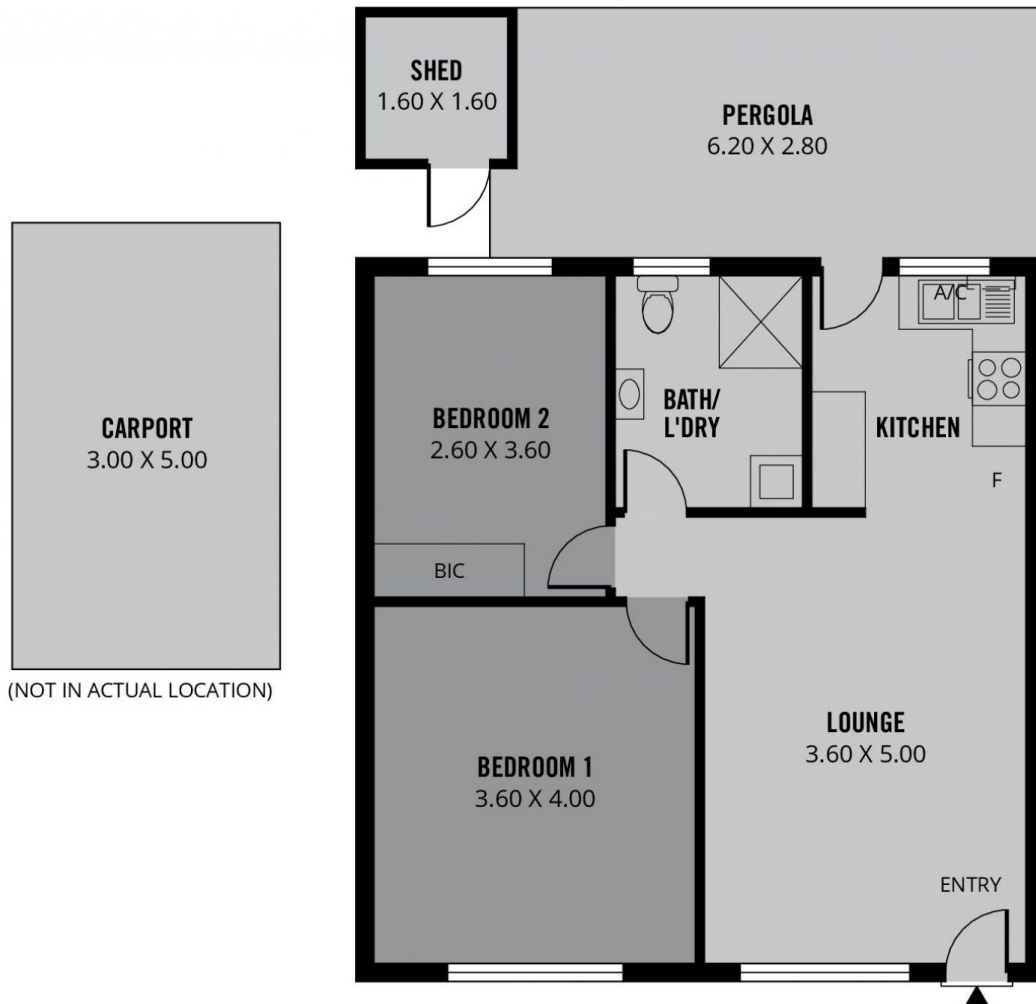
View : <https://www.schinellaproperty.com.au/6565825>



Mick Mehicic
0412452262



Damian Popowycz
0413 026 026



Scale in metres. This drawing is for illustration purposes only. All measurements are approximate and details intended to be relied upon should be independently verified. Produced by **The Fotobase Group**