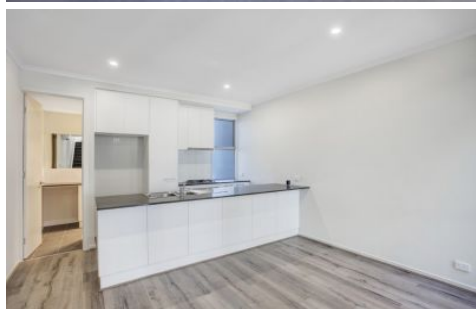


SCHINELLA.



11 Gill Road Lightsview SA

3  3  2 

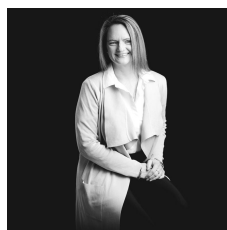
This stylish and contemporary, savvy property is a must to inspect, it is the perfect place to call home. The owners have thought this property through and have made many added features as well as upgrades that you just wont find in neighboring properties. It is bright, vibrant and full of style and most importantly it's secure living.

Situated in the highly sought after area of Lightsview only 8km from the city, offering easy access to public transport and close to community parks, cafes, restaurants, schools - the lifestyle that only this beautiful precinct can offer and at such great value.

Based on European style living over three levels, you will be delighted by how well the floorplan flows. Three

Type : House

View : <https://www.schinellaproperty.com.au/6534627>



Tami Stolarski
8294 4484

[For full version visit the website](https://www.schinellaproperty.com.au)

<https://www.schinellaproperty.com.au>