

SCHINELLA.



3 Stymie Place Mount Osmond SA

5 🛏 3 🚿 6 🚗

This grand family estate offers the peace and tranquillity of hills living so close to the city. With panoramic views of Adelaide's skyline, this is a once in a lifetime opportunity to secure a true lifestyle property.

Built by the current owners, this gated estate with intercom access, is set on approx. 2,800sqm of immaculately landscaped grounds in the leafy surrounds of this tightly held cul-de-sac.

With an expansive floorplan of over 700sqm, this much-loved home offers multiple living spaces with unique features that make this the ultimate entertainer and lifestyle retreat.

[For full version visit the website](https://www.schinellaproperty.com.au/6500354)

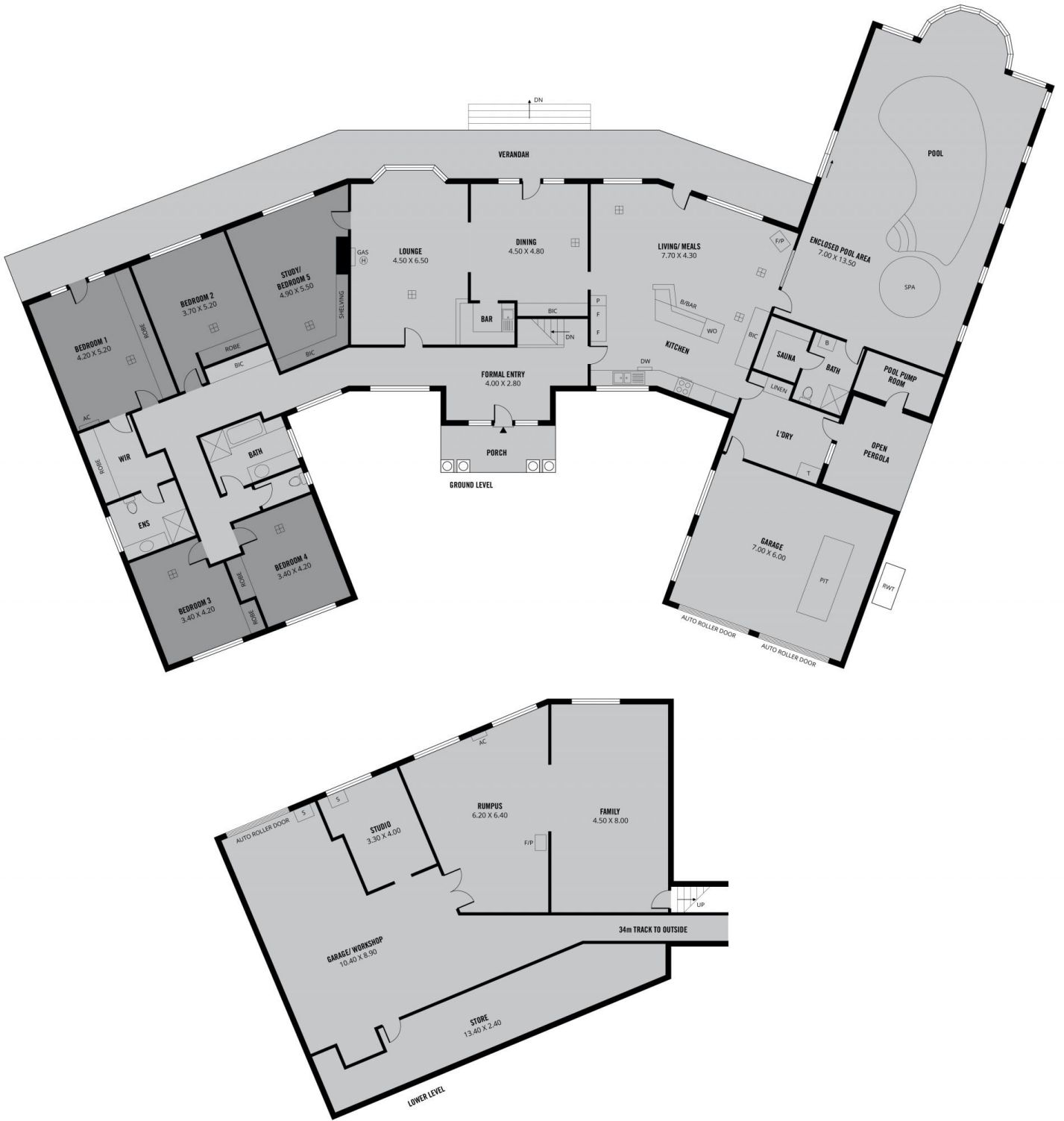
Type : House
Price : \$ 2,150,000
Building Size : 720 sqm
Land Size : 2800 sqm
View : <https://www.schinellaproperty.com.au/6500354>



Pat Schinella
08 8294 4484



DeArna Schinella
08 8294 4484



725m ²	534m ²	57m ²	114m ²	12m ²	8m ²
TOTAL	Living	Verandah	Garage/Workshop	Pergola	Porch

Scale in metres. This drawing is for illustration purposes only. All measurements are approximate and details intended to be relied upon should be independently verified.

