

SCHINELLA.



23A, 23B, Lydia Street Plympton SA

2  1  1 

ATTENTION INVESTORS- FIRST HOME BUYERS.

Nestled neatly in the ever-popular Plympton, these stunning homes are nearing completion. Contemporary in design, they are eye catching and modern with clean lines and contrasting colours.

Privately tucked away this quiet group of 3 are going to appeal to many in the market.

Appealing to a first home buyer with an affordable price tag, attractive to the investor with many features for tenants including public transport and amenities close by or of course a downsizer looking for a lock and leave property. Perhaps you children are in Adelaide studying, these properties are perfectly positioned for access to the city or

Type : House

View : <https://www.schinellaproperty.com.au/6474004>

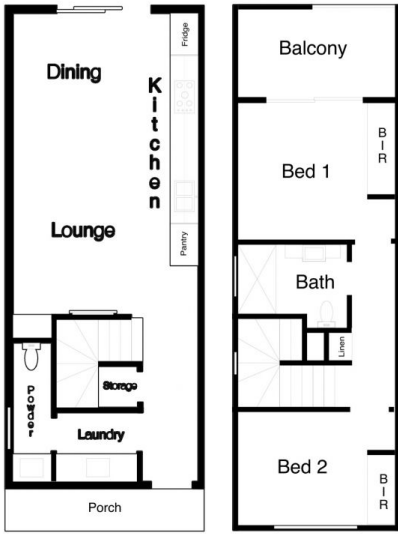


Jennifer Wilson-Gage
08 8294 4484

[For full version visit the website](https://www.schinellaproperty.com.au)

<https://www.schinellaproperty.com.au>

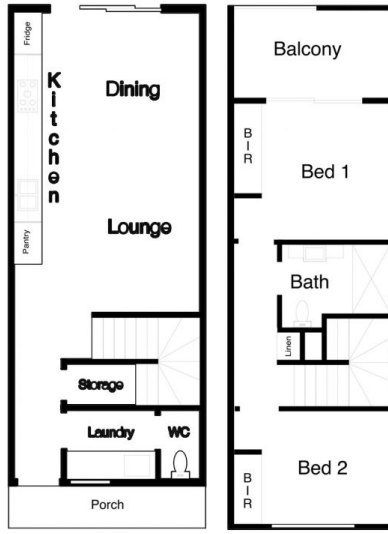
23A



Lower Level

Upper Level

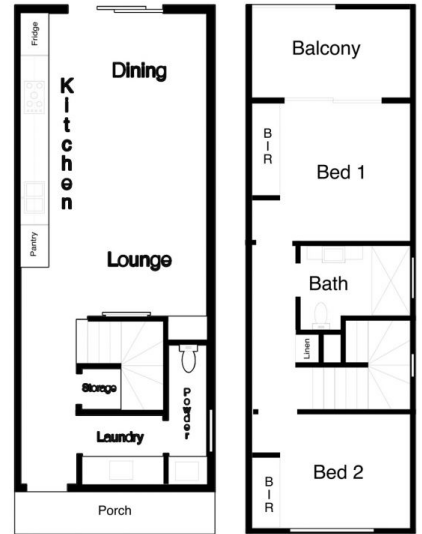
23B



Lower Level

Upper Level

23C



Lower Level

Upper Level

Image is for illustration purposes only. All measurements approx. All interested parties should make and rely upon their own enquiries to determine accuracy.

