




SCHINELLA.



47 Pine Lodge Crescent Grange SA

3  2  2 

Located adjacent to the prestigious Grange Golf Club, this dual-level contemporary home offers lifestyle living in a highly sought after beachside locale. Surrounded by quality homes and with a reserve across the street - its' quality, style and location will be hard to beat.

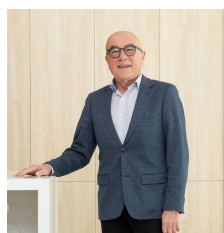
The lower level comprises a large entrance hall, the stunning kitchen with stone benchtops and quality SMEG appliances, and walk-in pantry, and an oversized open plan living and dining space. This living area opens to the outdoor alfresco making this the entertaining hub of the home. A double garage and separate laundry complete the lower level.

Upstairs are 3 bedrooms (main with ensuite and walk-in robe and bedrooms 2 and 3 with built-in robes), a full size family bathroom and a central family room - providing that

Type : House

Price : \$ 975,000

View : <https://www.schinellaproperty.com.au/6343681>



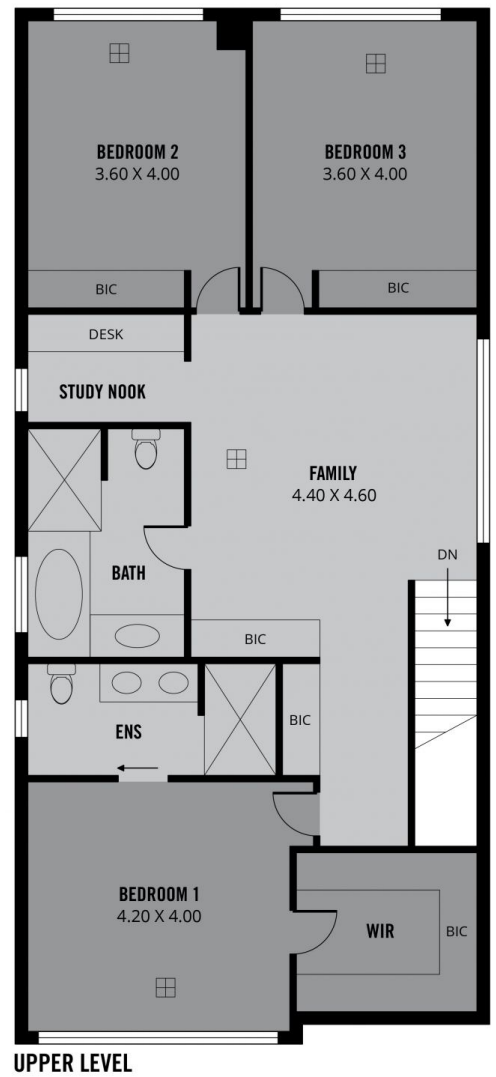
Mick Mehicic
0412452262



Damian Popowycz
0413 026 026

[For full version visit the website](https://www.schinellaproperty.com.au)

<https://www.schinellaproperty.com.au>



Scale in metres. This drawing is for illustration purposes only. All measurements are approximate and details intended to be relied upon should be independently verified.

Produced by **The Fotobase Group**