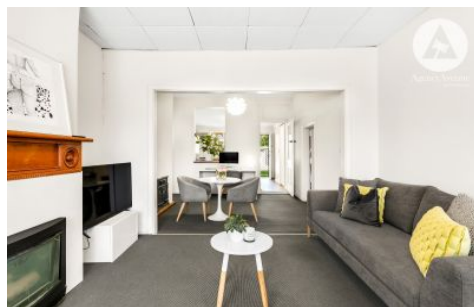
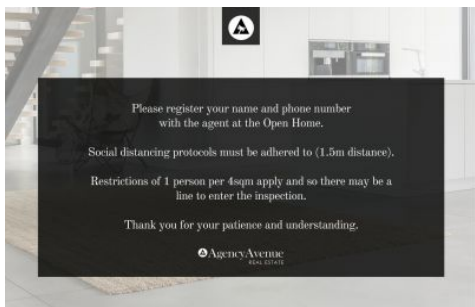


SCHINELLA.



10 Melbourne Street Glenelg North SA

2  **1** 

Whether you are looking for an attractive investment, downsizing where everything is at your fingertips or entering the market for the first time, this charming stone fronted cottage has you covered.

Sitting on a generous 260sm this little gem is nestled nicely in a beautiful tree lined street in the ever popular seaside suburb of Glenelg North. Perfectly positioned close to everything a savvy buyer looks for.

Built in approx. 1860 this 2 bedroomed cottage is blessed with many original features including the lofty high ceilings. This home is coming to the market after being owned by the same family for many years, it will be sadly missed once sold.

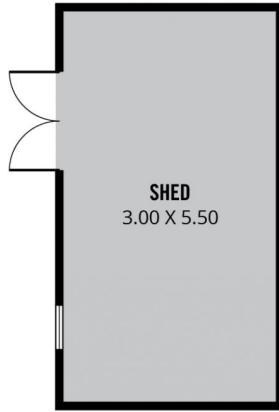
Type : House
Land Size : 260 sqm
View : <https://www.schinellaproperty.com.au/6312306>



Jennifer Wilson-Gage
08 8294 4484

[For full version visit the website](https://www.schinellaproperty.com.au)

<https://www.schinellaproperty.com.au>



118m²

TOTAL

78m²

Living

18m²

Shed

12m²

Verandah

10m²

Entertaining
Deck



Scale in metres. This drawing is for illustration purposes only. All measurements are approximate and details intended to be relied upon should be independently verified.

Produced by **The Fotobase Group**