

SCHINELLA.



9 Rosalia Court Kidman Park SA

4 2 4

On a commanding corner allotment in the heart of this prestigious estate, this contemporary family residence offers spacious family living in a peaceful and highly sought after location.

An impressive streetscape of grand family homes with wide frontages and glorious gardens greets you as you enter this quiet no-through-road, providing a picturesque and family-friendly atmosphere. The home itself is spread over two levels with multiple living spaces and plenty of accommodation.

Downstairs the formal lounge and dining with raked ceiling welcome you as you enter, with lots of natural light and a real sense of space. The kitchen with stainless steel appliances overlooks the meals area and family room, providing that valuable second living space. A home

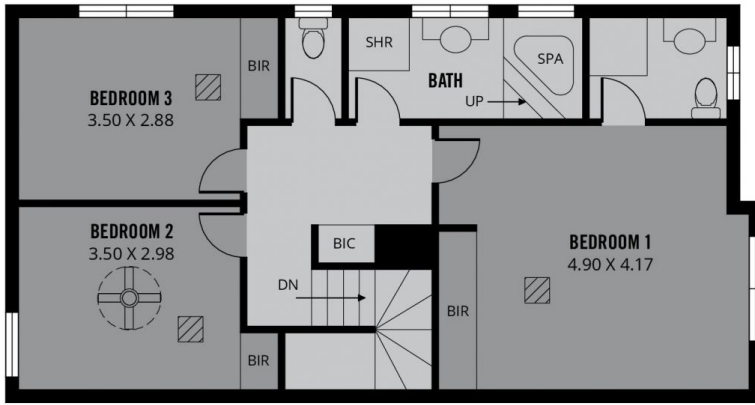
Type : House
Price : \$ 748,000
Land Size : 454 sqm
View : <https://www.schinellaproperty.com.au/63028>
44



Damian Popowycz
0413 026 026

[For full version visit the website](https://www.schinellaproperty.com.au)

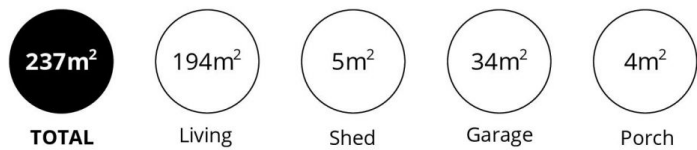
<https://www.schinellaproperty.com.au>



LEVEL 1



GROUND



Scale in metres. This drawing is for illustration purposes only. All measurements are approximate and details intended to be relied upon should be independently verified.

Produced by **The Fotobase Group**