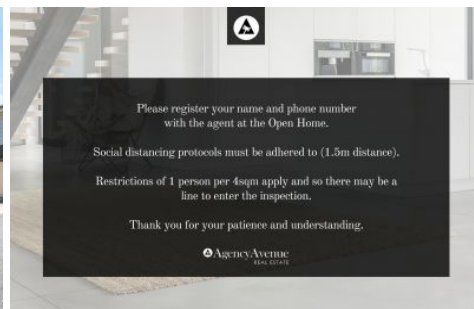
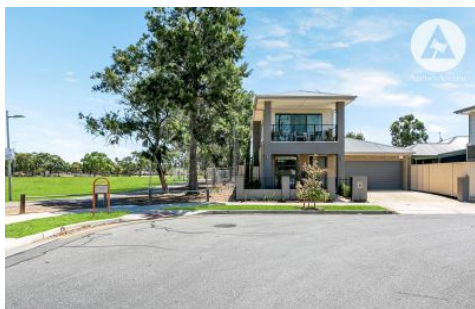


SCHINELLA.



28 Sydney Avenue Kidman Park SA

3 2 2

Designed with clean modern lines and a sophisticated colour palette, this contemporary two-storey home is a standout for growing families. It's unique position offers uninterrupted views over tranquil Collins Reverse - the ultimate 'backyard' to enjoy.

Inside offers a fluent connection between separate living spaces. A welcoming entrance opens to the formal living room which flows through to the light-filled kitchen, dining, and lounge area. This space seamlessly opens to the outdoor alfresco entertaining area.

The tasteful modern kitchen is the hub of the home. It includes stainless steel appliances, built-in dishwasher, double sink and is complete with elegant glass splash back

[For full version visit the website](https://www.schinellaproperty.com.au/6302675)

Type : House
Price : \$ 683,000
Building Size : 246 sqm
Land Size : 392 sqm
View : <https://www.schinellaproperty.com.au/6302675>



DeArna Schinella
08 8294 4484

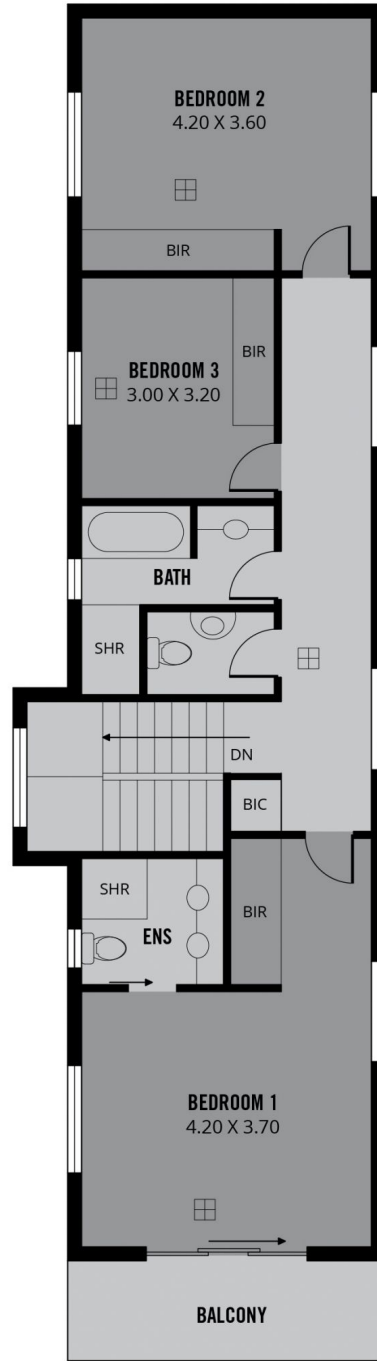
<https://www.schinellaproperty.com.au>



RWT



GROUND FLOOR

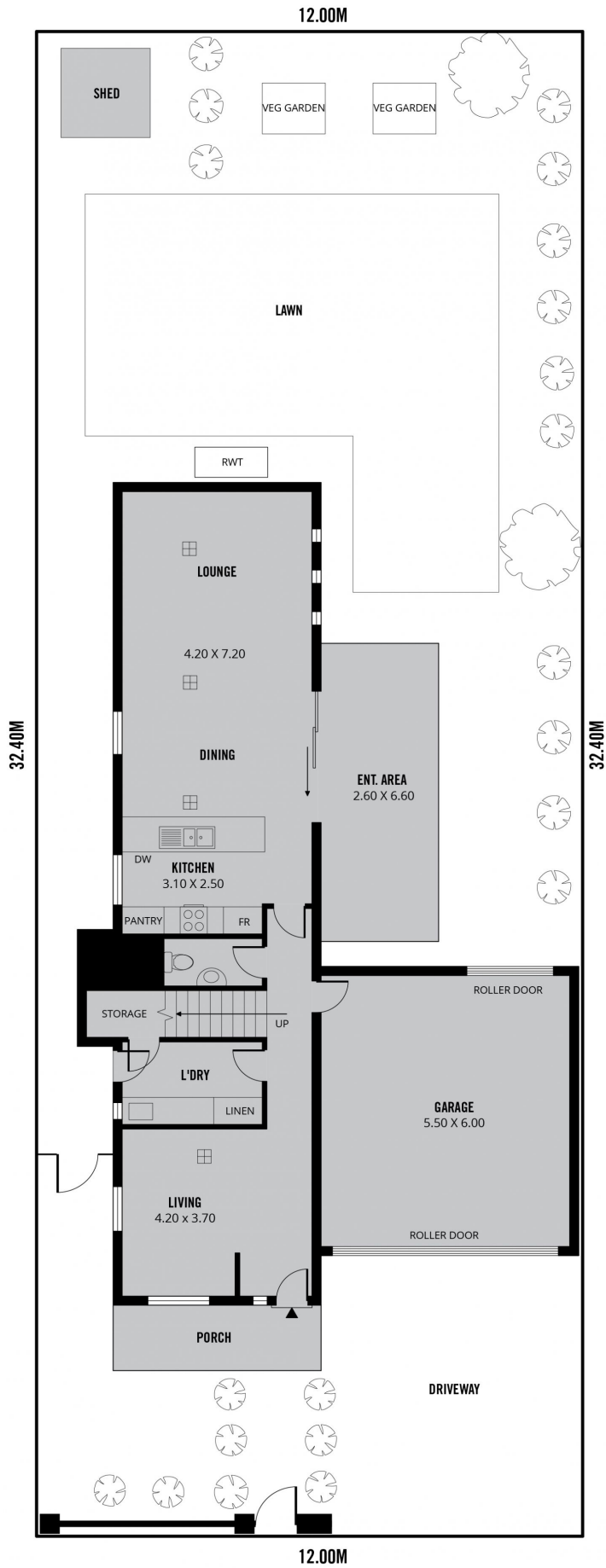


FIRST FLOOR



Scale in metres. This drawing is for illustration purposes only. All measurements are approximate and details intended to be relied upon should be independently verified.

Produced by **The Fotobase Group**



SITE PLAN
NOT TO SCALE