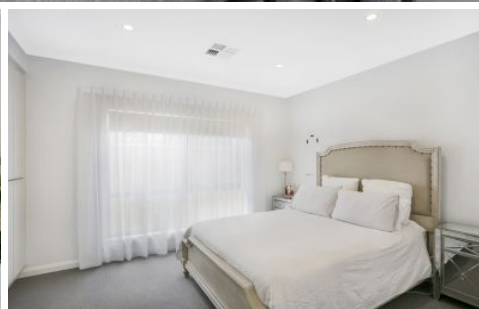


SCHINELLA.



20 Gulfview Parade Valley View SA

3 2 4

This well maintained, luxurious home is a delight to present and ticks all the "I want" boxes. Located close to Ingle Farm and Gilles Plains Shopping Centres, St Pauls School and public transport and an easy commute to the city.

A welcoming study, or second living area is upon entry to this light filled, well planned out house. Walking through you will find the bedrooms, the main room offering built in robes and a spacious ensuite with double sink. The other two bedrooms also with built in robes and are serviced by the main bathroom which is a functional three way layout, giving you greater flexibility. A large bath with separate shower in the main section is great for young and older children alike.

Type : House

View : <https://www.schinellaproperty.com.au/6302670>



Tami Stolarski
8294 4484

[For full version visit the website](https://www.schinellaproperty.com.au)

<https://www.schinellaproperty.com.au>