

SCHINELLA.



1F Sixth Avenue Warradale SA

3  2  2 

ONLY 2 LEFT - BE QUICK TO SECURE YOURS & MOVE IN BEFORE XMAS!

PLEASE CONTACT AGENT TO ARRANGE YOUR INSPECTION

Impressive from every angle, these brand new deluxe townhouses have been built to perfection. Designed with premium high-end fixtures and fittings to offer a new level of luxury living in a winning location.

With a bold street presence and wide frontage on display, these homes deliver that extra 'WOW' factor you simply won't find elsewhere.

[For full version visit the website](https://www.schinellaproperty.com.au)

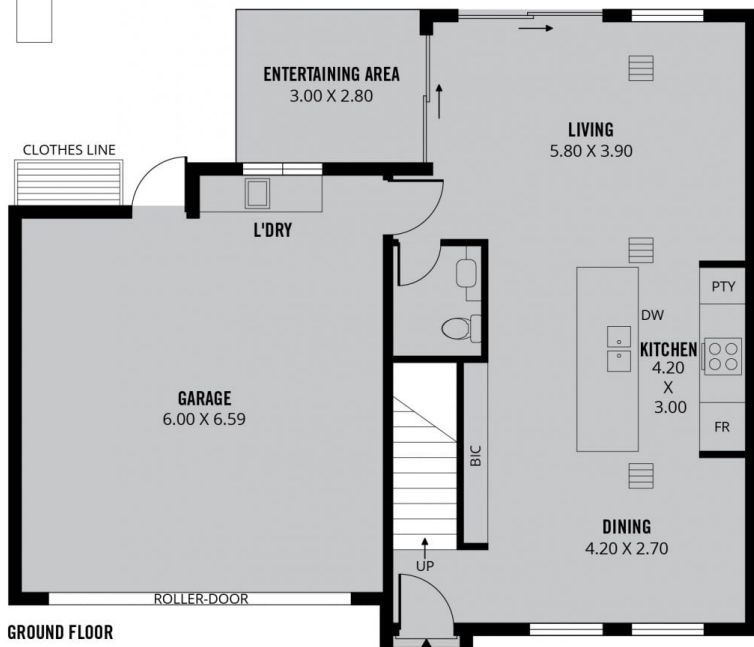
Type : House
Building Size : 182 sqm
View : <https://www.schinellaproperty.com.au/6302649>



Marco Schinella
08 8294 4484

<https://www.schinellaproperty.com.au>

RWT



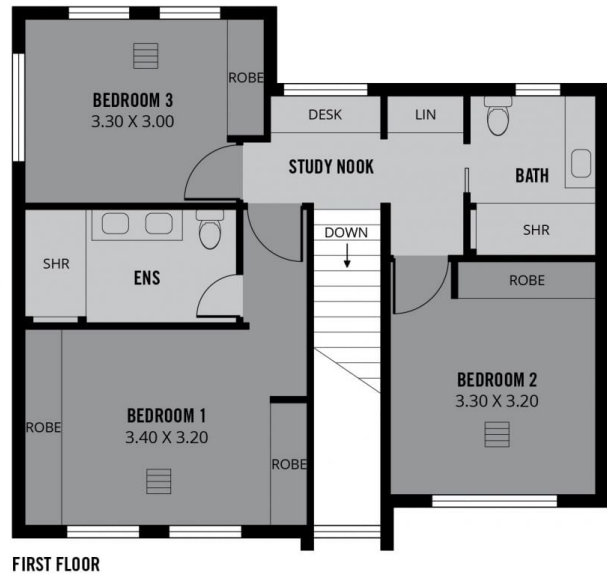
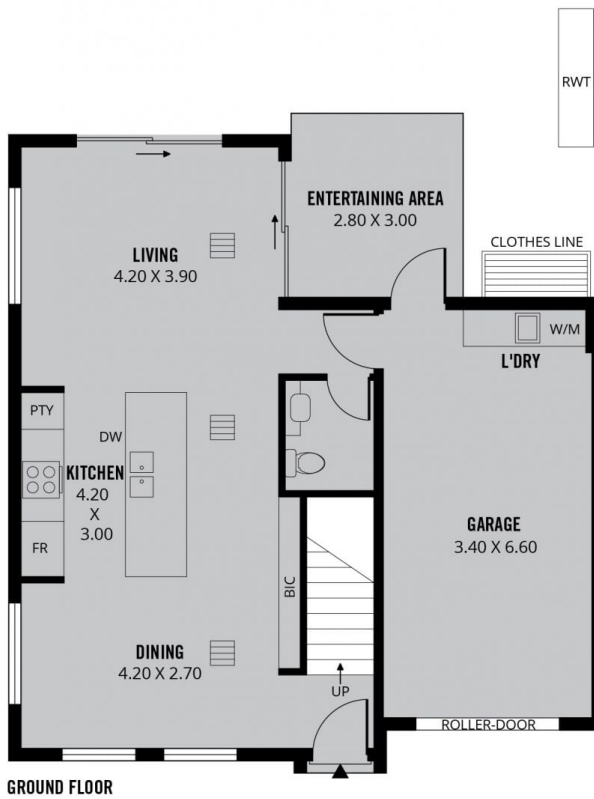
182m²

TOTAL



Scale in metres. This drawing is for illustration purposes only. All measurements are approximate and details intended to be relied upon should be independently verified.

Produced by **The Fotobase Group**



165m²

TOTAL



Scale in metres. This drawing is for illustration purposes only. All measurements are approximate and details intended to be relied upon should be independently verified.

Produced by **The Fotobase Group**