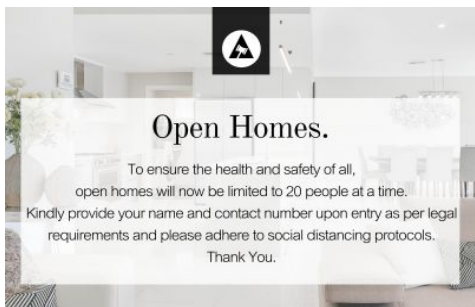


SCHINELLA.



2 Russell Street Glenelg North SA

3 2 2

This luxurious, modern, spacious 3 bedroom townhouse is located in the picturesque beach side location of Glenelg North.

Type : House

View : <https://www.schinellaproperty.com.au/6302645>

With quality fittings throughout, you certainly won't be disappointed with this one.

Featuring open plan, lightly filled downstairs living and dining area with neutral tones, porcelain floors, designer kitchen including ,Caesar stone bench tops and European appliances. Step out to the generous sized undercover alfresco entertaining area with low maintenance rear yard with artificial turf.



Tami Stolarski
8294 4484

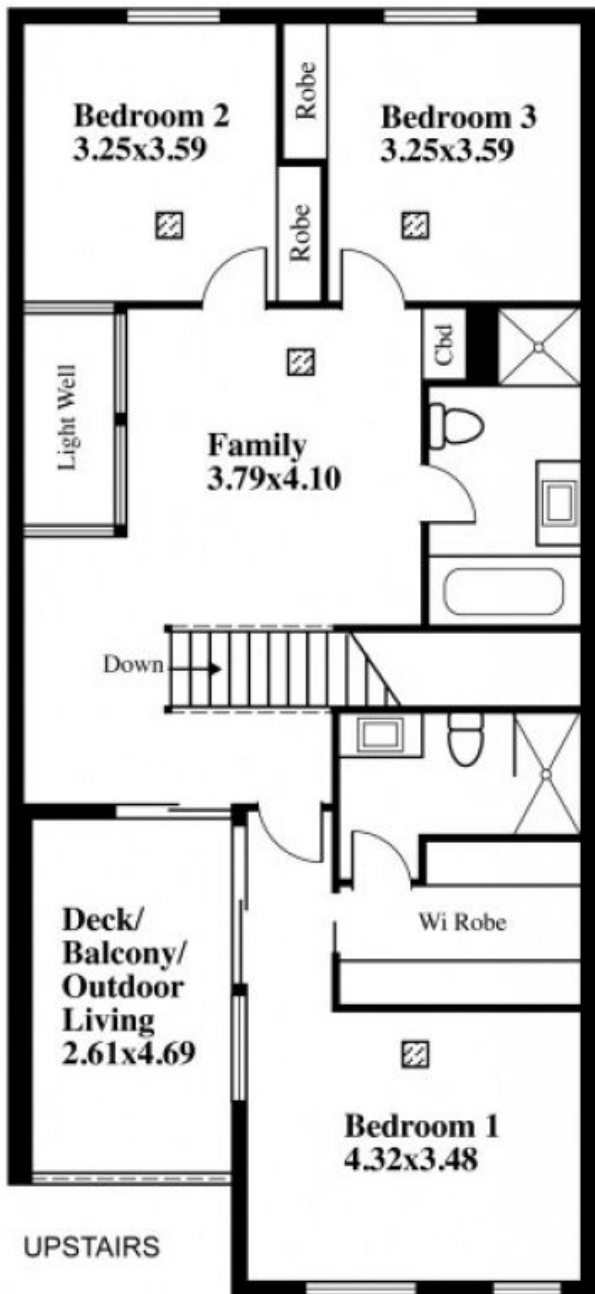
Adjacent to the downstairs living area is a separate powder

[For full version visit the website](https://www.schinellaproperty.com.au)

<https://www.schinellaproperty.com.au>

Corner Of Tapleys Hill Road & Russell Street, Glenelg

LEGEND
 Air cond ducts



This drawing is for illustration purposes only.
(Drawing is not to scale)

The drawing and the information contained is not intended to be part of any contract. All measurements are approximate and details intended to be relied upon should be independently verified.

ESTIMATE OF AREA
 GROUND FLOOR 119.36 Square metres/ 12.83 Squares
 (Including Garage)
 UPSTAIRS 126.48 Square metres/ 13.59 Squares
 FRONT VERANDAH 8.10 Square metres/ 0.87 Squares
 OUTDOOR LIVING 15.36 Square metres/ 1.65 Squares
TOTAL 269.30 Square metres/ 28.94 Squares