




SCHINELLA.



39 Kuranye Circuit Largs North SA

3  2  1 

This beautifully appointed and presented executive townhouse will appeal to many in the market. The savvy investor looking for the perfect rental property in a sought-after area, exciting opportunity for the first home buyer or potentially a family with 3 bedrooms and 2 bathrooms on offer.

Masterfully designed and constructed this home is presented flawlessly. The home has been well planned with all bedrooms located on the 2nd level. Timeless neutral tones have been chosen throughout this home to allow you to add your own touches of colour.

The elegant main suite takes advantage of a lovely outlook from the large picture window where the morning sun

Type : House

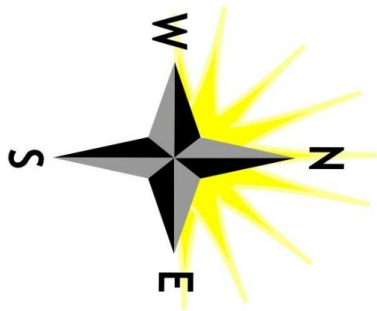
View : <https://www.schinellaproperty.com.au/6302630>



Jennifer Wilson-Gage
08 8294 4484

[For full version visit the website](https://www.schinellaproperty.com.au)

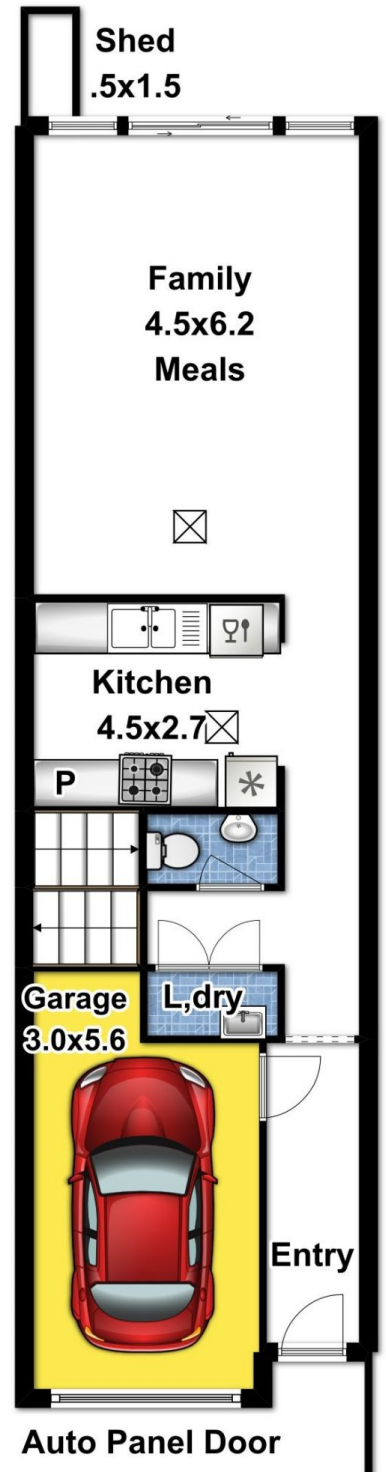
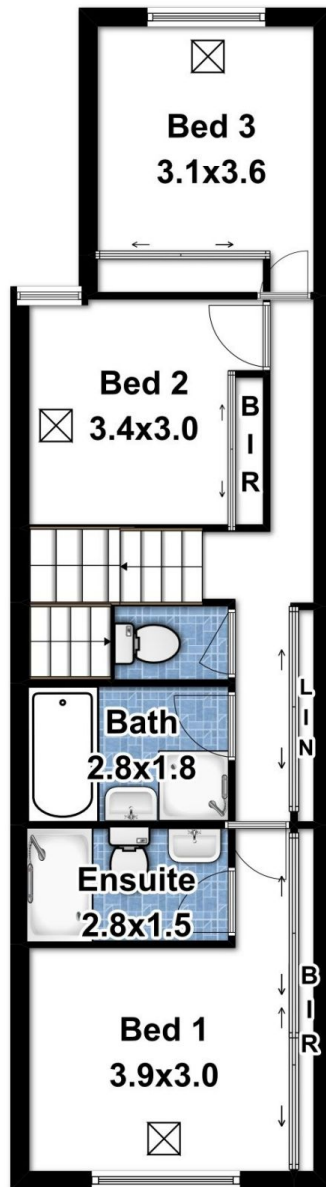
<https://www.schinellaproperty.com.au>



Upper Level

Ground Level

Area	Sqm
Ground Level	60
Upper Level	58
Garage	16.8
Shed	8
Total	142.8



This sketch is for illustration purposes only. All measurements are metric, being internal, not to scale, and approximate.

Produced by
propertylaneimages.com.au