




SCHINELLA.



103 Flaxmill Road Morphett Vale SA

3  **1**  **1** 

Don't miss inspecting this stunning unit offering 3 bedrooms, open plan living area, chic kitchen and walk in pantry. A great size for a unit with just the 2 properties on the site.

This property underwent a full renovation a little over a year ago and is now a delightful property with a lot to offer.

The main bedroom is of generous size and is completed with charcoal carpet, built in robe and Venetian blinds. Bedroom 2 also offers a built-in robe. Bedroom 3 continues with same neutral tone carpet and sleek white Venetian blinds.

The modern kitchen offers loads of cupboards and bench

[For full version visit the website](https://www.schinellaproperty.com.au/6302625)

Type : House

Price : \$ 283,000

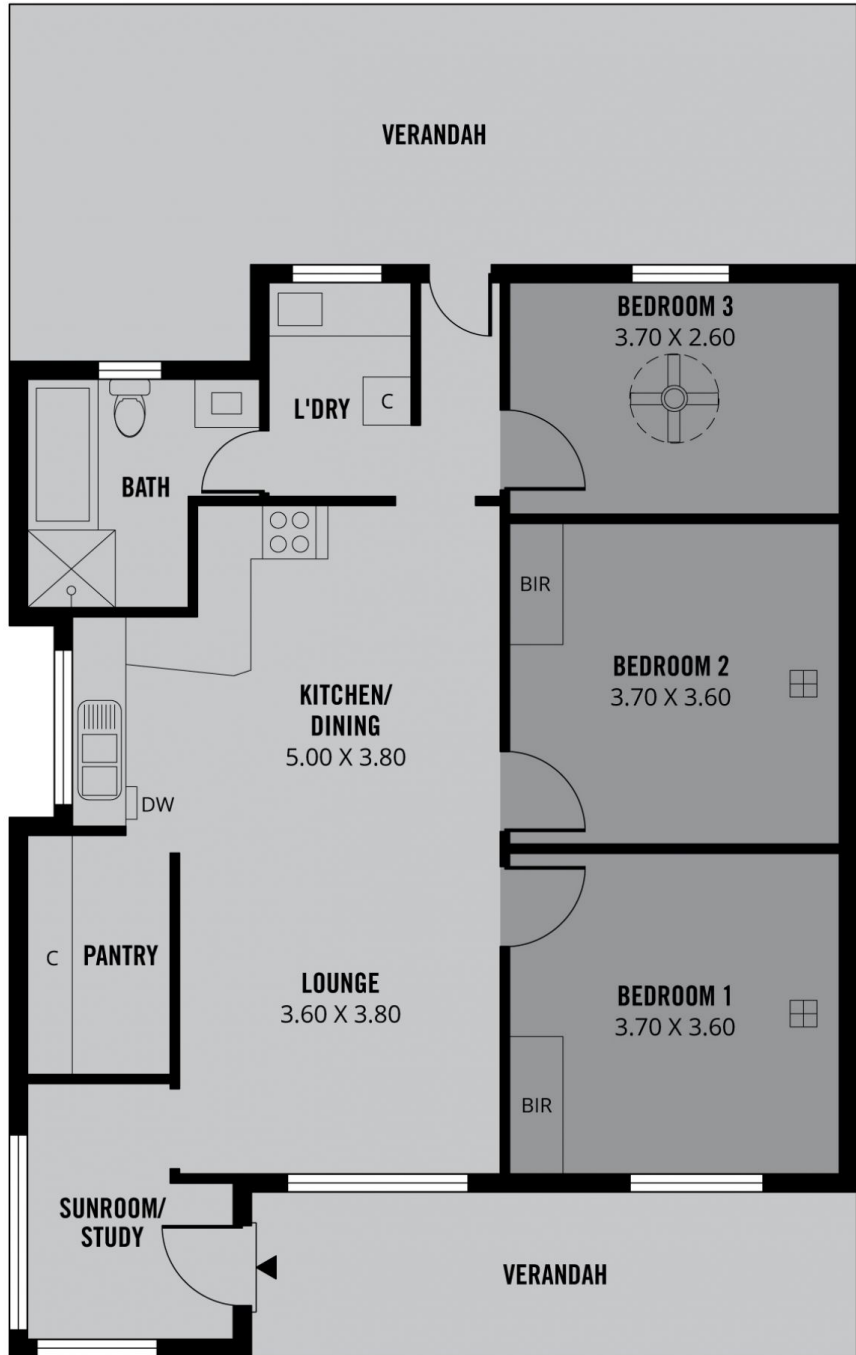
View : <https://www.schinellaproperty.com.au/6302625>



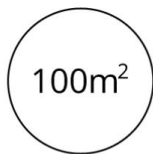
Jennifer Wilson-Gage

08 8294 4484

<https://www.schinellaproperty.com.au>



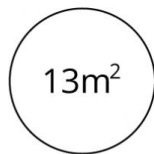
TOTAL



Living



Verandah



Carport

Scale in metres. This drawing is for illustration purposes only. All measurements are approximate and details intended to be relied upon should be independently verified. Produced by **The Fotobase Group**