

# SCHINELLA.



**18 William Road Christies Beach SA**

**3**  **1** 

Don't miss inspecting this neat and sweet property sitting on a approx. 620sm with a generous approx 18.9 metre frontage. Subdivision is possible on this property (STCC) and there are plans available from the current owner if required.

This property will appeal to several portions of the market, first home buyer, an investor/developer or someone wishing to extend the current home with plenty of land available (STCC) You may even want to knock over and rebuild in this popular location.

This 1960s home currently offers 3 bedrooms, the main bedroom is a great size with a beautiful large window allowing plenty of light through. Bedroom 2 and 3 are also

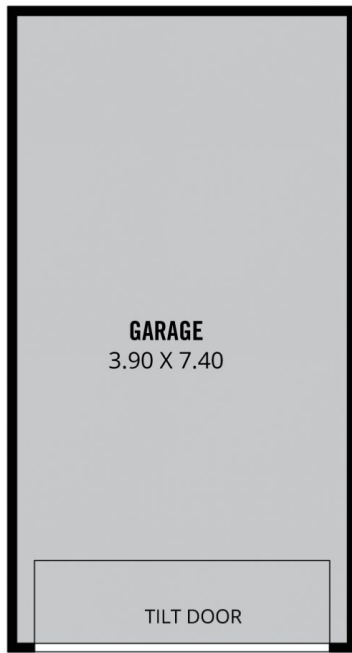
**Type** : House  
**Price** : \$ 319,250  
**Land Size** : 620 sqm  
**View** : <https://www.schinellaproperty.com.au/63026>  
24



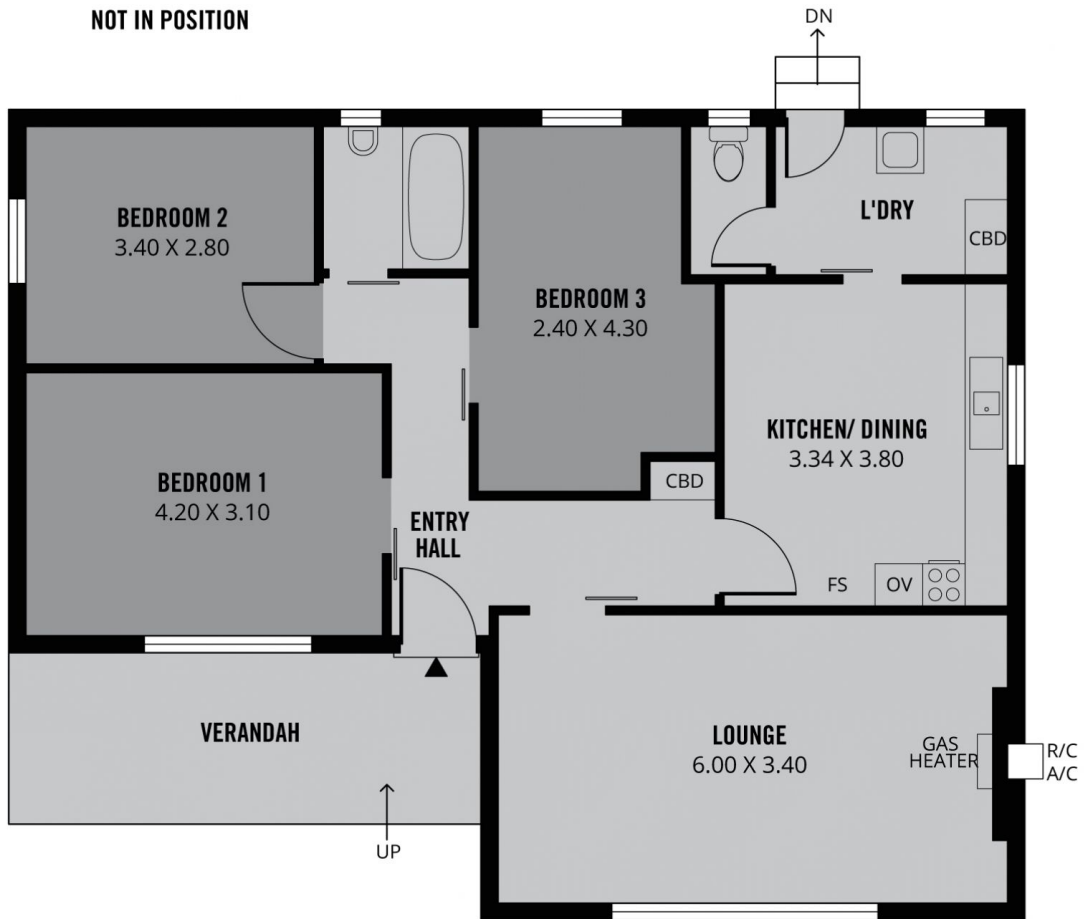
**Jennifer Wilson-Gage**  
**08 8294 4484**

[For full version visit the website](https://www.schinellaproperty.com.au)

<https://www.schinellaproperty.com.au>



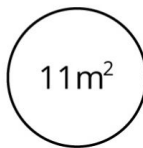
NOT IN POSITION



**TOTAL**



Living



Verandah



Garage

Scale in metres. This drawing is for illustration purposes only. All measurements are approximate and details intended to be relied upon should be independently verified. Produced by **The Fotobase Group**