

# SCHINELLA.



1H Sixth Avenue Warradale SA

3  2  2 

BE QUICK TO SECURE! PLEASE CONTACT AGENT TO ARRANGE INSPECTION

1H - Under Contract  
1G - Sold  
1F - Sold

**Type** : House  
**Building Size** : 182 sqm  
**View** : <https://www.schinellaproperty.com.au/6302613>

**\*\*ATTENTION INVESTORS - RENT THIS OUT & ACHIEVE ATTRACTIVE RENTAL RETURN OF \$580-595 PW! (5.2% APPROX GROSS RETURN PA)\*\***

Impressive from every angle, these brand new deluxe townhouses have been built to perfection. Designed with premium high-end fixtures and fittings to offer a new level of luxury living in a winning location.

[For full version visit the website](#)



**Marco Schinella**  
08 8294 4484

<https://www.schinellaproperty.com.au>



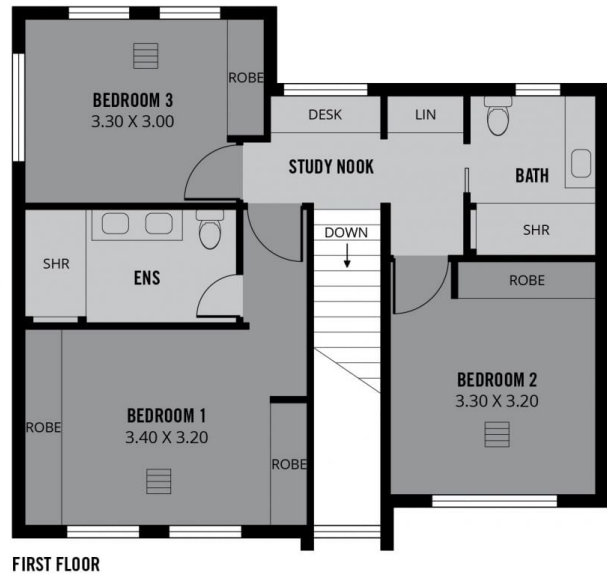
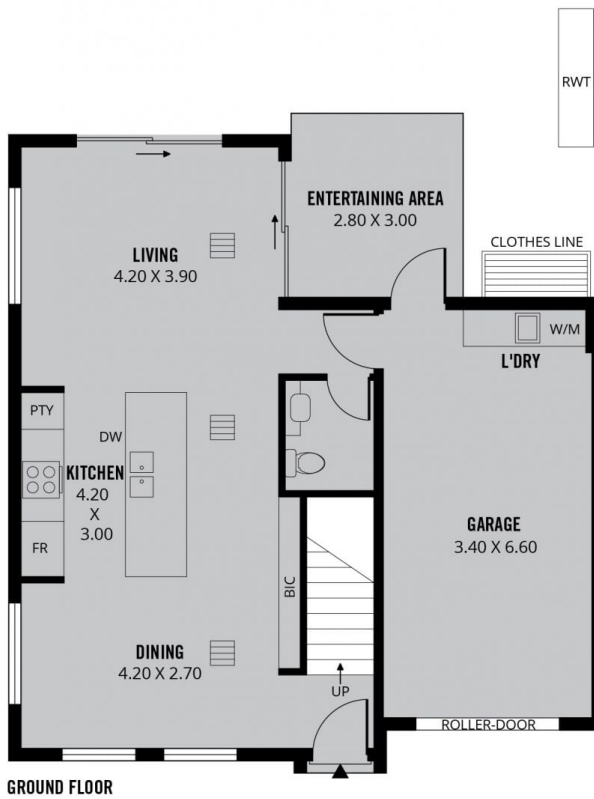
182m<sup>2</sup>

TOTAL



Scale in metres. This drawing is for illustration purposes only. All measurements are approximate and details intended to be relied upon should be independently verified.

Produced by **The Fotobase Group**



165m<sup>2</sup>

TOTAL



Scale in metres. This drawing is for illustration purposes only. All measurements are approximate and details intended to be relied upon should be independently verified.

Produced by **The Fotobase Group**