

SCHINELLA.



103A Flaxmill Road Morphett Vale SA

3  1  3 

This stunning property was fully renovated late 2019. Completed with clever planning and perfectly executed, it has been transformed into a stylish and modern home.

Offering 3 bedrooms and 1.5 bathrooms, it is a rare find in the market with a generous floorplan and plenty of back garden in which to enjoy.

The moment you enter this unique property you will feel at home with open plan living incorporating a charming gas open fireplace set in a spectacular feature wall. The property is flooded with natural light through large picture windows and is tastefully presented.

The chic kitchen is well planned and fully equipped

[For full version visit the website](https://www.schinellaproperty.com.au/6302608)

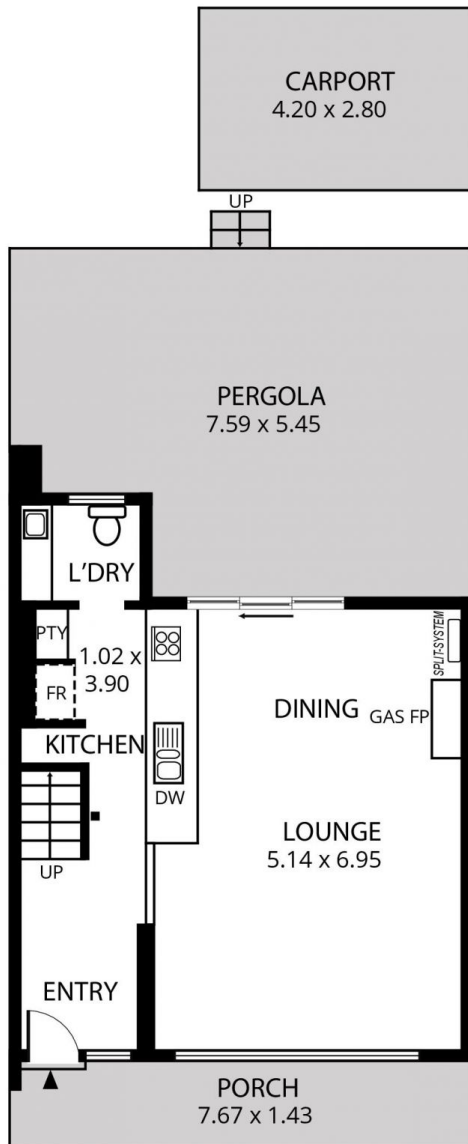
Type : House
Price : \$ 295,000
View : <https://www.schinellaproperty.com.au/6302608>



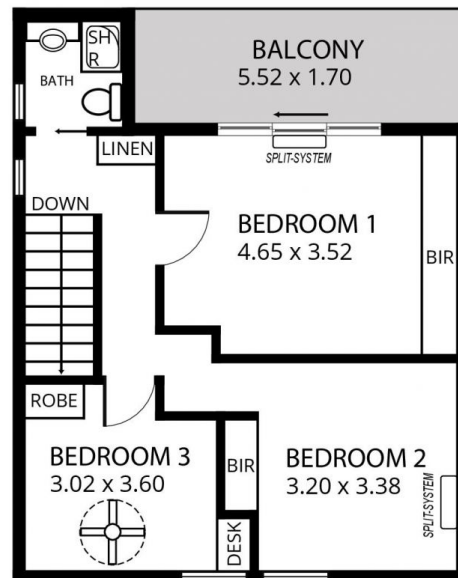
Jennifer Wilson-Gage
08 8294 4484

<https://www.schinellaproperty.com.au>

UPPER LEVEL



LOWER LEVEL



Area Measurements	
Carport	= 11.0m ₂
Porch	= 11.0m ₂
Pergola	= 41.0m ₂
Balcony	= 09.0m ₂
Lower Living Area	= 53.0m ₂
Upper Living Area	= 50.0m ₂
Total	= 176.0m₂

103A FLAXMILL ROAD MORPHETT VALE

Scale in meters. This graphic is for illustrative purpose only. Dimensions are approximate, and the accuracy cannot be guaranteed. All information and details should be verified by the interested persons.