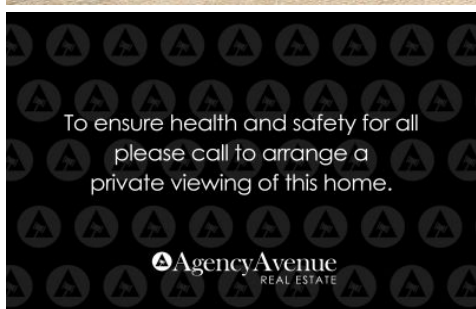


# SCHINELLA.



## 2a Russell Street Glenelg North SA

3 2 2

This luxurious, spacious three bedroom townhouse is in the highly sought after suburb of Glenelg North, one of the best beachside locations on offer.

This property offers light filled open plan living, kitchen and dining area all in neutral tones with easy care porcelain floors. A designer kitchen complete with caesar stone benchtops, european stainless steel appliances including gas cooktop and dishwasher are what makes this property a must to inspect.

The kitchen leads out to a beautiful undercover alfresco entertaining area and courtyard, a perfect place for friends and family to gather no matter what time of the year.

**Type** : House

**View** : <https://www.schinellaproperty.com.au/6302594>

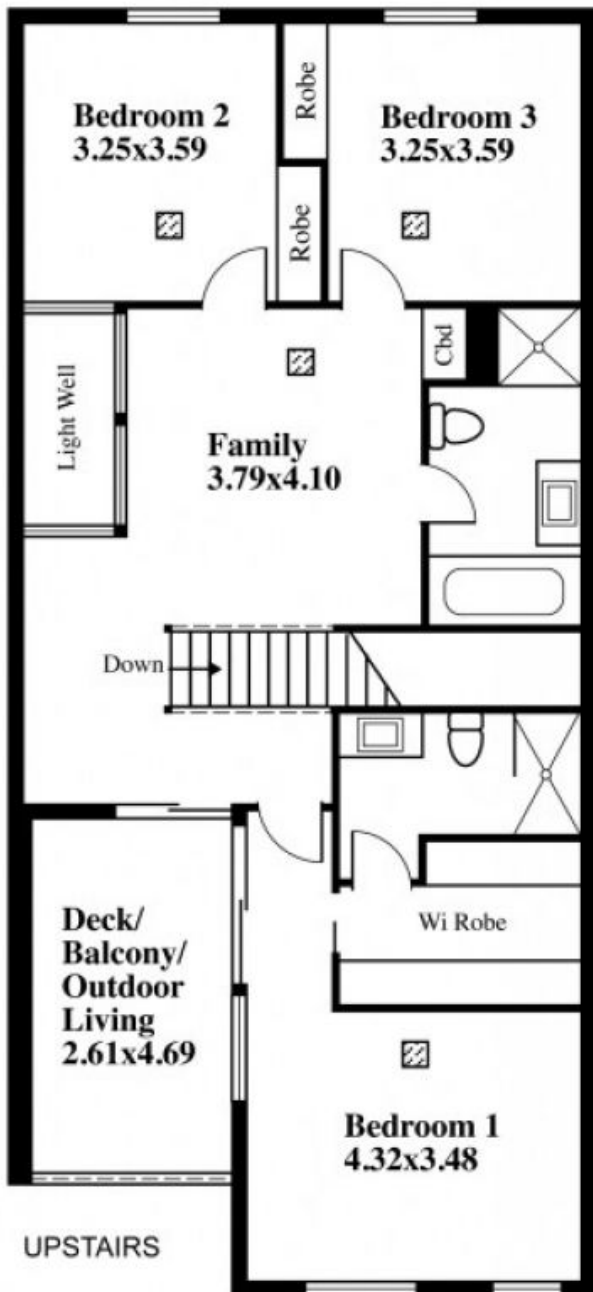


**Tami Stolarski**  
8294 4484

[For full version visit the website](https://www.schinellaproperty.com.au)

<https://www.schinellaproperty.com.au>

# Corner Of Tapleys Hill Road & Russell Street, Glenelg



This drawing is for illustration purposes only.  
(Drawing is not to scale)

The drawing and the information contained is not intended to be part of any contract. All measurements are approximate and details intended to be relied upon should be independently verified.

**ESTIMATE OF AREA**  
 GROUND FLOOR 119.36 Square metres/ 12.83 Squares  
 (Including Garage)  
 UPSTAIRS 126.48 Square metres/ 13.59 Squares  
 FRONT VERANDAH 8.10 Square metres/ 0.87 Squares  
 OUTDOOR LIVING 15.36 Square metres/ 1.65 Squares  
**TOTAL 269.30 Square metres/ 28.94 Squares**