

# SCHINELLA.



## 6 Robertson Place Marino SA

5 🛏 3 🚿 3 🚗

Offers by Friday 27th of March 9am

Gracing an expansive north-facing frontage with ocean views, this impressive family home sprawls out onto a picturesque reserve - a unique position that is hard to find.

Set amongst beautifully established landscaped grounds, with lap pool surrounded by exotic and native plants and organic vegetable garden, this well-maintained home offers resort style-living.

Architecturally designed, the private entrance of this home opens to the light-filled lounge and adjoining dining room. This space features elegant floor-to-ceiling windows with access out to the extensive balcony - An entertainers

**Type** : House

**View** : <https://www.schinellaproperty.com.au/6302592>



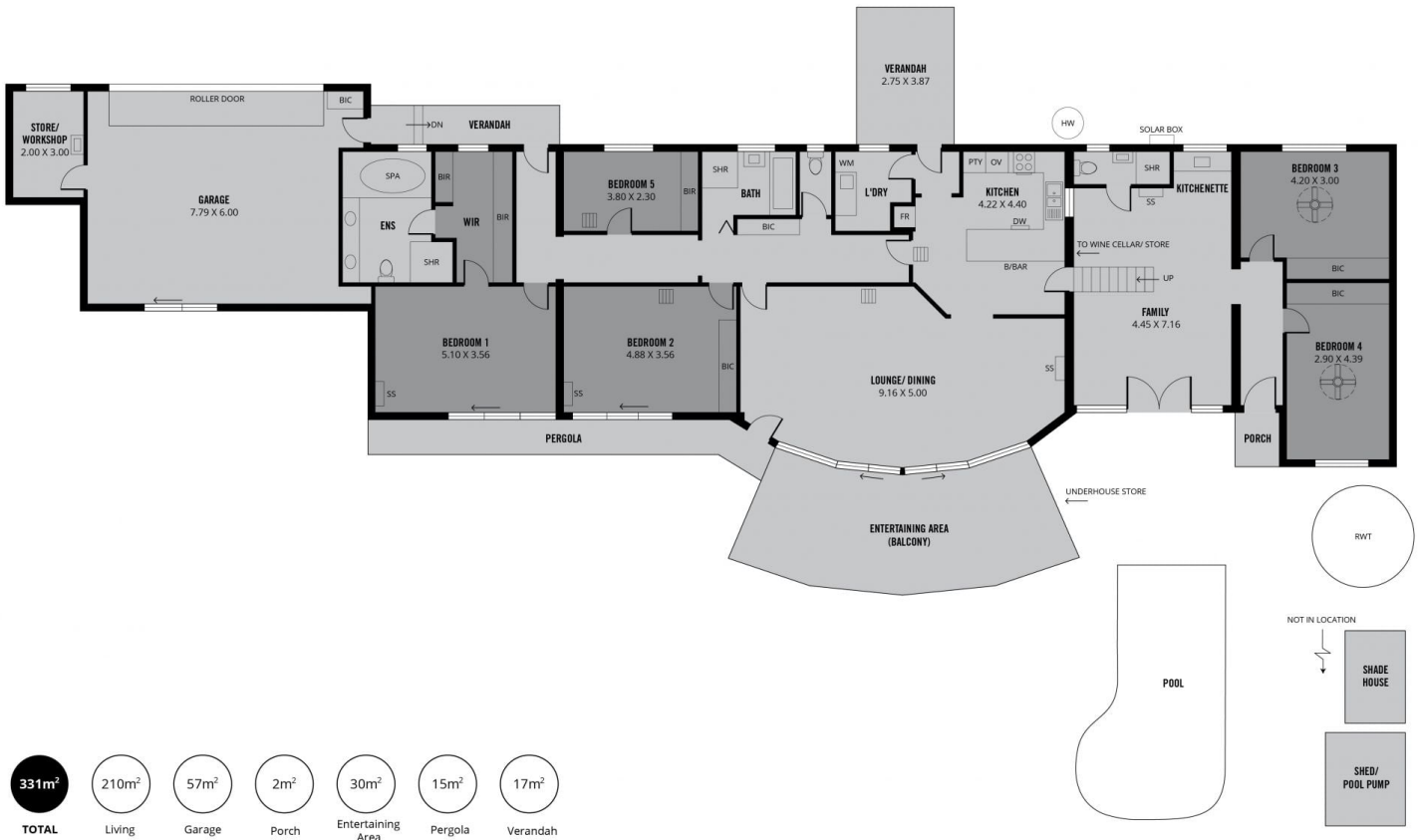
**Pat Schinella**  
08 8294 4484



**DeArna Schinella**  
08 8294 4484

[For full version visit the website](https://www.schinellaproperty.com.au)

<https://www.schinellaproperty.com.au>



Scale in metres. This drawing is for illustration purposes only. All measurements are approximate and details intended to be relied upon should be independently verified.

Produced by The Fotobase Group

