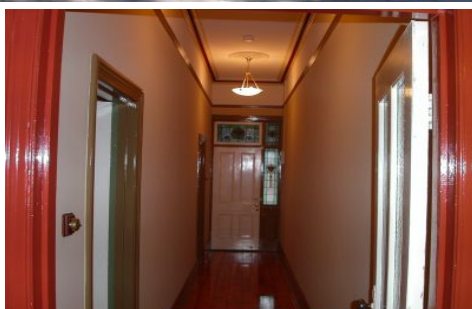
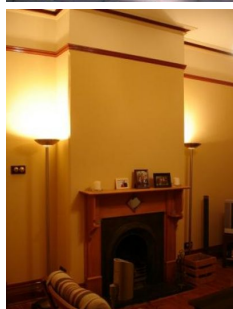


SCHINELLA.



15 Bosanquet Avenue Prospect SA

2 1 1

You will love all the old-world charm that this property has on offer as well as the modern features that we all have on our "I want" lists. Located in a beautiful tree lined street of the always sought-after suburb of Prospect, this property will not disappoint.

Within walking distance to the cosmopolitan lifestyle that Prospect Road offers with all the shopping, restaurants, boutique cafes and public transport - you will find that you won't be using the car that much at all. A nice walk or bike ride into the heart of North Adelaide and the CBD is such an easy commute.

Upon entry you will be welcomed by the long, traditional hallway with two large bedrooms with a formal separate

Type : House

View : <https://www.schinellaproperty.com.au/6302584>



Tami Stolarski
8294 4484

[For full version visit the website](https://www.schinellaproperty.com.au)

<https://www.schinellaproperty.com.au>

