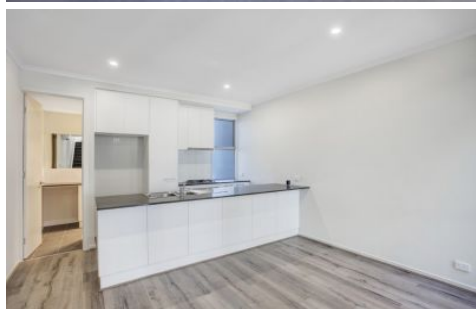

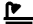



SCHINELLA.



11 Gill Road Lightsview SA

3  3  2 

This stylish and contemporary, savvy townhouse is a must to inspect, it is the perfect place to call home. The owners have thought this property through and have made many added features as well as upgrades, that you just wont find in neighboring properties. It is bright, vibrant and full of style and most importantly it's secure living.

Situated in the highly sought after area of Lightsview, 8km from the city with public transport so close as well as community parks, cafes, restaurants, schools, medical facilities - the lifestyle that only this beautiful new precinct can offer and at such great value.

Based on European style living over three levels, you will be delighted by how well the floorplan flows. Three

[For full version visit the website](#)

Type : Townhouse

View : <https://www.schinellaproperty.com.au/6302517>