

SCHINELLA.



31 Santorini Walk Mawson Lakes SA

3 2 2

AUCTION Sun 19th May At 10.30am Onsite (Unless Sold Prior) Recent Sales Available

A contemporary design of elegance, class and style - This impressive brand new residence has the ultimate lake front position overlooking the glistening waters.

Featuring clean modern lines and attractive stone façade, the inviting entrance opens to a wide foyer and quality timber staircase with glass balustrading. Spanning over two levels of luxury living, this home includes 3 metre tall ceilings and superb fixtures and fittings throughout to provide a sense of space and style.

Positioned upstairs is the generous open plan living and

[For full version visit the website](https://www.schinellaproperty.com.au)

Type : House
Building Size : 290 sqm
View : <https://www.schinellaproperty.com.au/6302501>

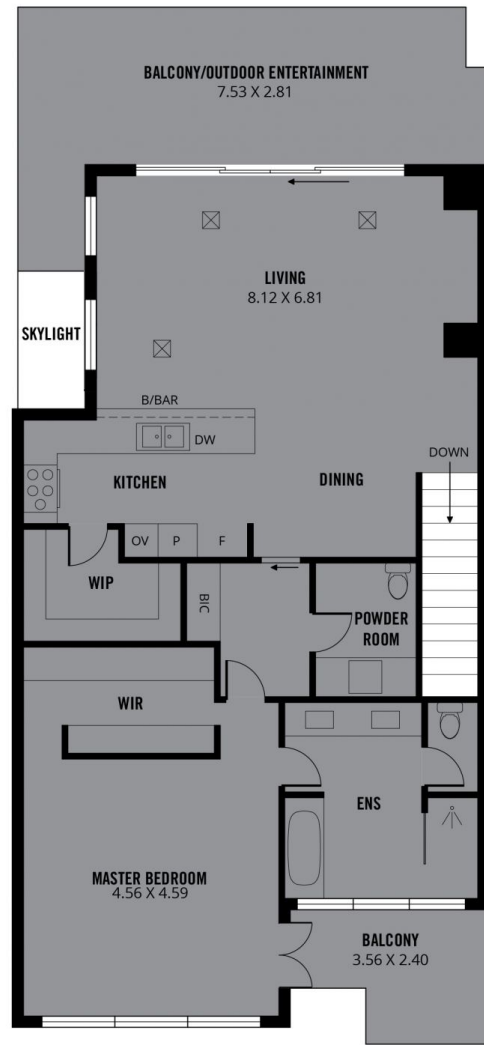
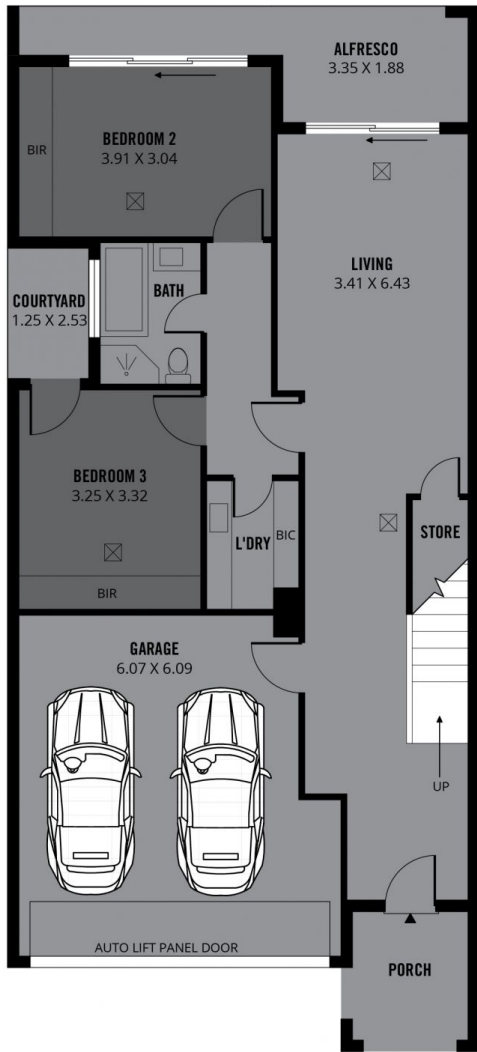


DeArna Schinella
08 8294 4484



Pat Schinella
08 8294 4484

<https://www.schinellaproperty.com.au>



LOWER LEVEL

UPPER LEVEL



Scale in metres. This drawing is for illustration purposes only. All measurements are approximate and details intended to be relied upon should be independently verified.

Produced by The Fotobase Group