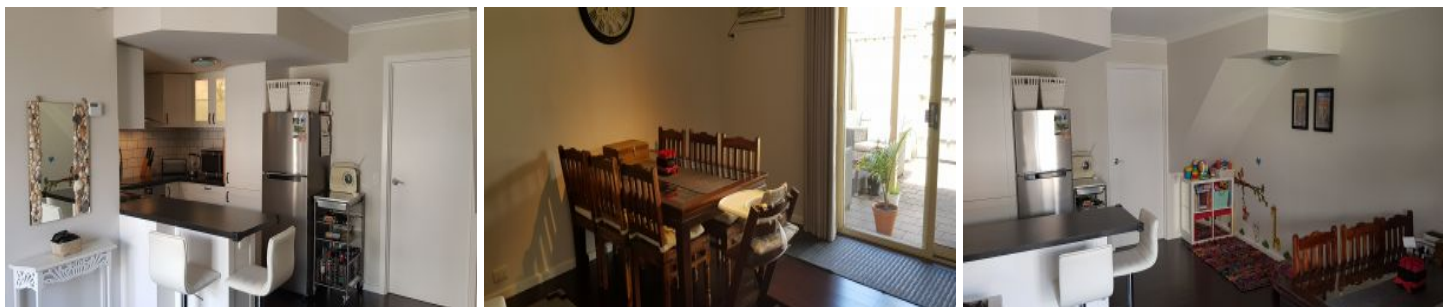


# SCHINELLA.



2/31 Henley Beach Road Mile End SA

3 🛏 1 🚿 2 🚗

This gorgeous townhouse has been fully renovated to a high standard with luxury fixtures and fittings. Sitting on the city fringe with an easy commute to the CBD by either public transport right at your doorstep, a nice walk or bike ride through the west parklands.

**Type** : Townhouse

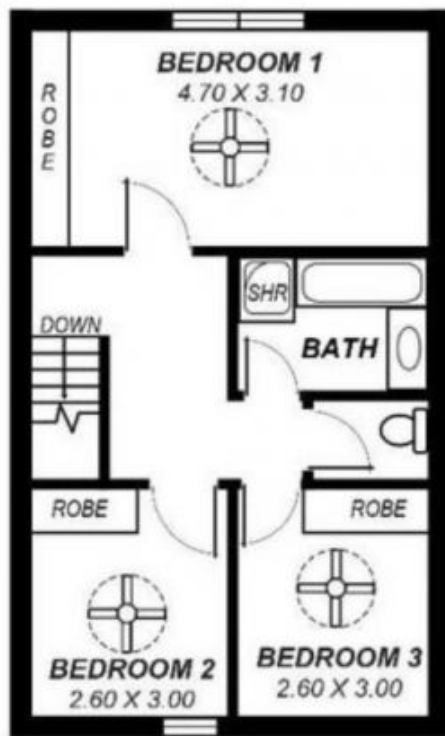
**View** : <https://www.schinellaproperty.com.au/6302482>

The welcoming courtyard is situated behind a large wall for the best privacy and leads into the living area of the townhouse. There is also a quaint sunroom that is perfect to sit in and relax after a hard day.

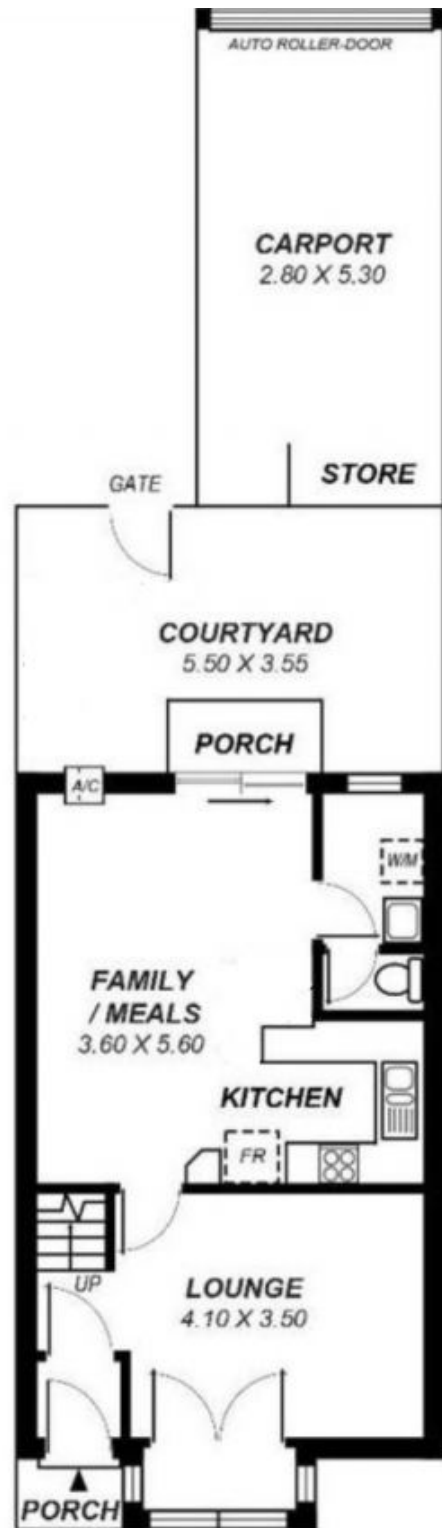
A brand new IKEA kitchen with feature light up cupboards has ample bench and cupboard space with a concealed dishwasher and puratap. The design has been well thought out and you will love spending time in this area. There is

[For full version visit the website](https://www.schinellaproperty.com.au)

<https://www.schinellaproperty.com.au>



**FIRST FLOOR**



**GROUND FLOOR**

*This drawing is for illustration purposes only .  
All measurements are approximate and details intended  
to be relied upon should be independently verified.*

Area	m <sup>2</sup>
Living:	85.38
Carport:	14.84
Courtyard:	19.53
Porch:	01.40
<b>Total:</b>	<b>121.15</b>