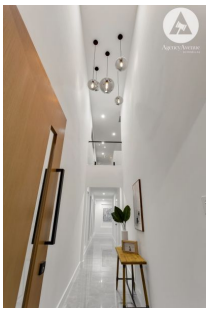
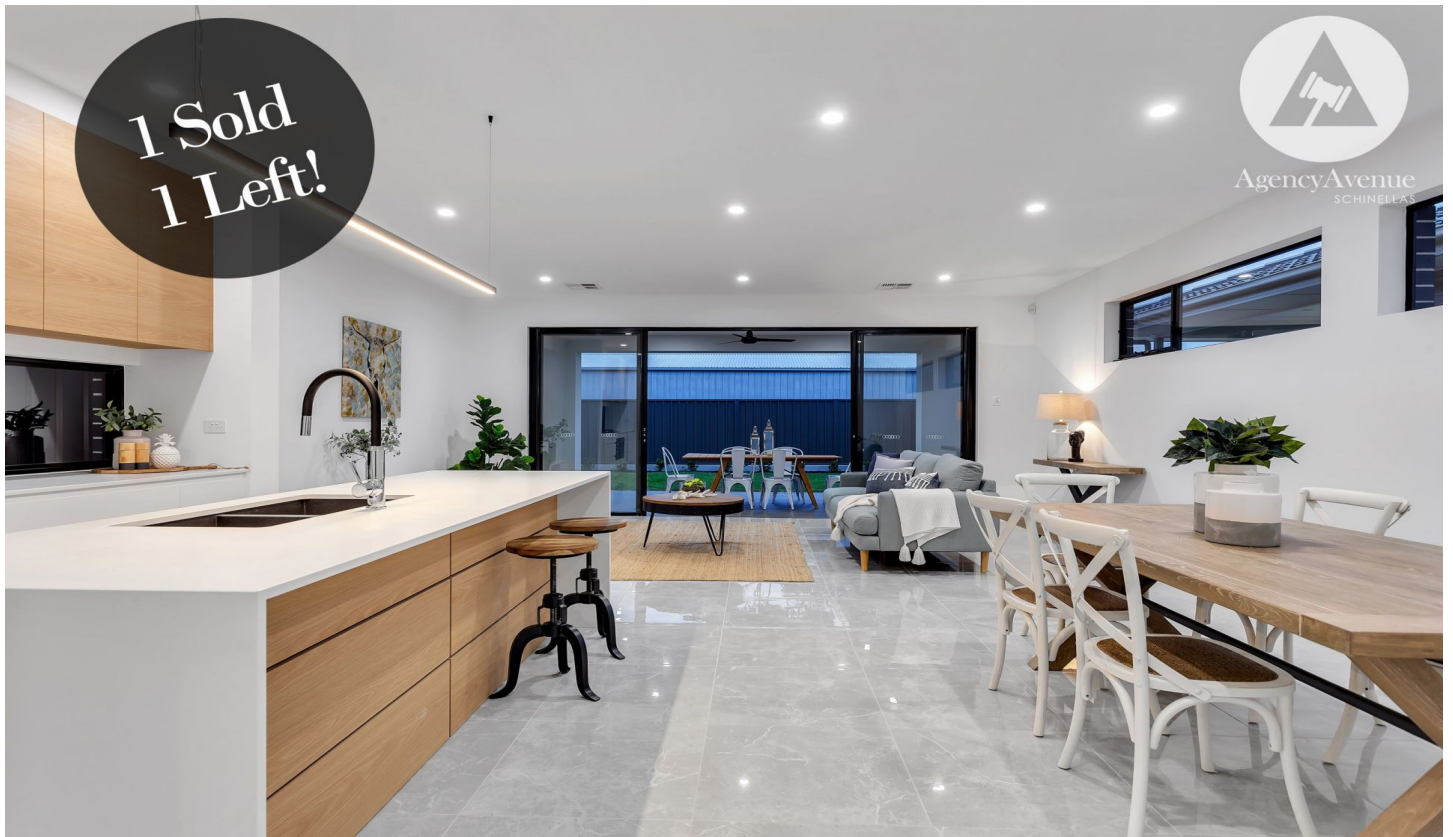


SCHINELLA.



8 Porter Crescent Fulham Gardens SA

4 🛏 3 🚗 2 🚗

A contemporary fusion of light and space, this brand-new residence oozes style and sophistication. From the light-filled entry hall with its' dramatic void, to the spacious living areas, this contemporary classic is luxuriously appointed throughout, offering living at the highest level.

Spread over two levels, the home showcases glamorous interior styling in a carefully constructed floorplan, where form meets function to provide practical and convenient living options to suit a variety of buyers.

The lower floor accommodates a designer 2-pac kitchen with stainless steel appliances and gas cook top, ceasarstone benchtops and an integrated dishwasher. A butler's pantry provides additional storage space. The

Type : House
Building Size : 314.86 sqm
Land Size : 377 sqm
View : <https://www.schinellaproperty.com.au/6302458>



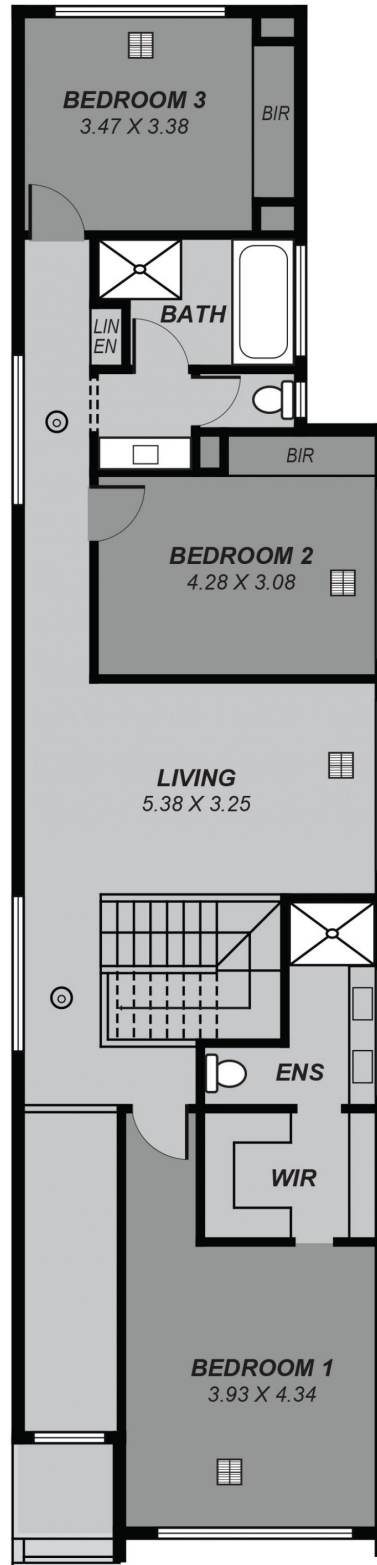
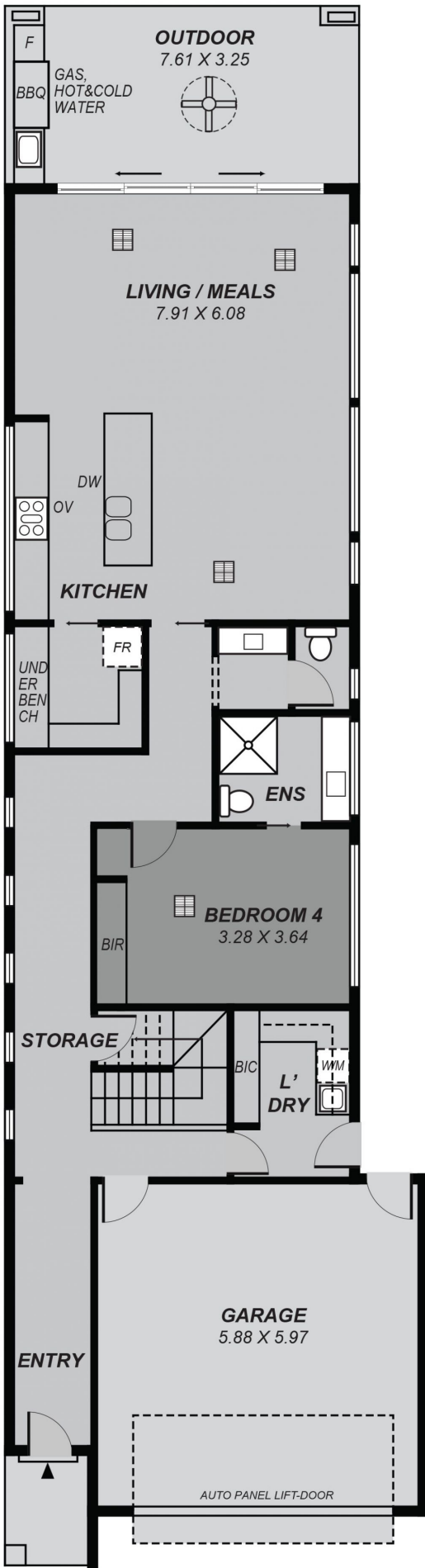
DeArna Schinella
08 8294 4484



Pat Schinella
08 8294 4484

[For full version visit the website](https://www.schinellaproperty.com.au)

<https://www.schinellaproperty.com.au>



*This drawing is for illustration purposes only .
All measurements are approximate and details intended
to be relied upon should be independently verified.*

Total: 314.86