

SCHINELLA.



25 Neston Avenue Plympton SA

2 🛏 2 🚿 3 🚗

First home buyers, look no further? Investors, your search ends here!

Presented with charming 1950's character features, this light & bright solid home is beautifully presented and ready to enjoy. Whether you're starting up or slowing down, this appealing home stands freely on a corner torrens title allotment and offers a lifestyle of more living with less maintenance in highly prized Plympton.

With attractive landscaped gardens on easy care grounds, the large front yard offers pathway access to the spacious entrance foyer featuring stylish pendant lights and warm timber floating floors. A vibrant and airy feel compliments a tasteful host of upgrades throughout, ready to add your

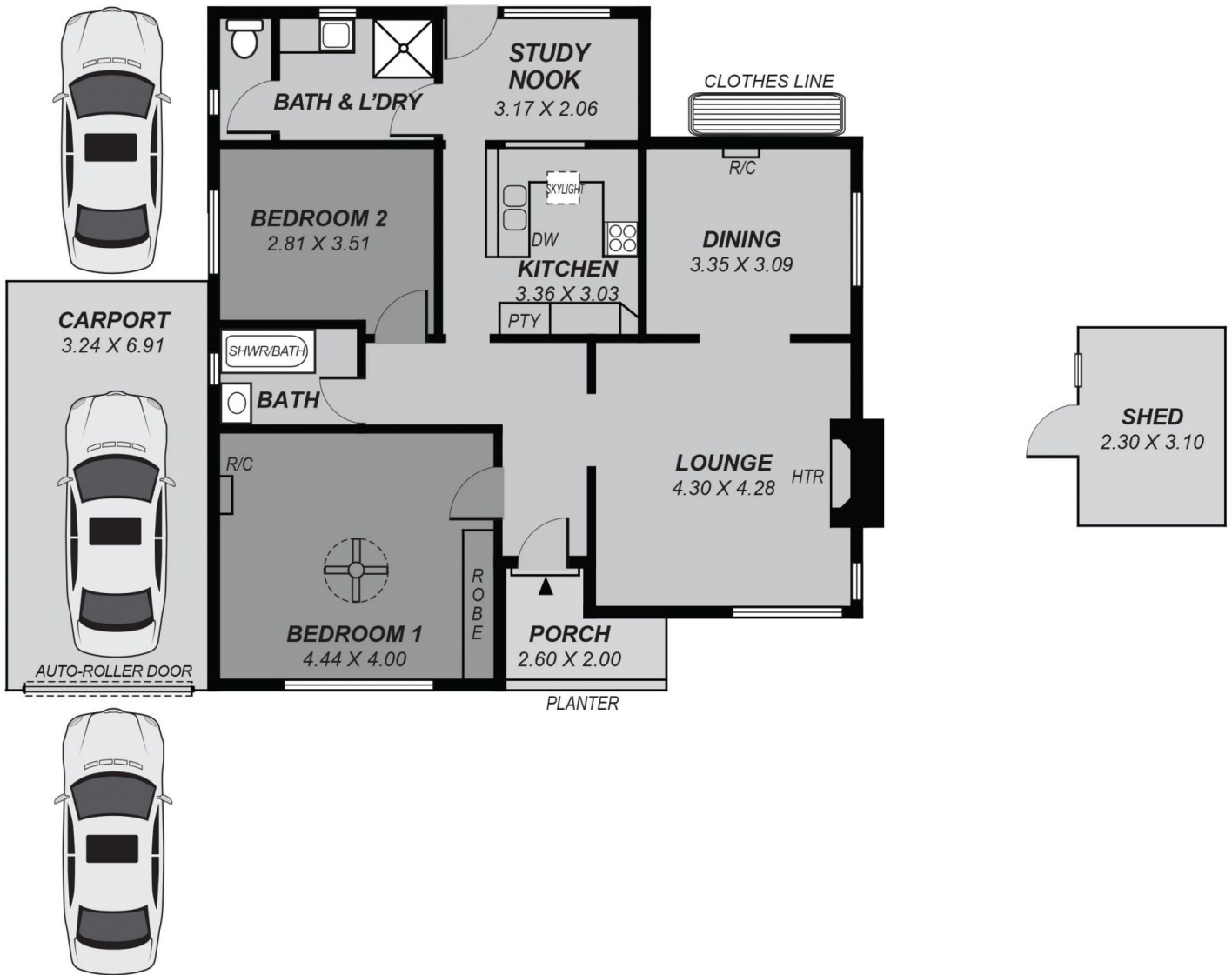
[For full version visit the website](https://www.schinellaproperty.com.au)

Type : House
Building Size : 124 sqm
Land Size : 415 sqm
View : <https://www.schinellaproperty.com.au/6302444>



Marco Schinella
08 8294 4484

<https://www.schinellaproperty.com.au>



*This drawing is for illustration purposes only .
 All measurements are approximate and details intended
 to be relied upon should be independently verified.*

Area	m ²
Total:	124.42