

# SCHINELLA.



**14 Marine Parade Marino SA**

5 🛏 2 🚿 3 🚗

PLEASE CONTACT AGENT TO ARRANGE INSPECTION BY APPOINTMENT

With uninterrupted coastal views from the clifftop, this superb seaside residence is located on the Esplanade in an area that is renowned for its' squid fishing, snorkelling, dolphin spotting and spectacular coastal walking trails.

Architecturally designed and completely renovated with elegance and style, this impressive home offers contemporary living and spectacular views. Set on a commanding corner position with steps leading up to the spacious porch and double front door entrance. The entry features stunning beaded chandeliers, high raked ceilings and sky light windows which flood the entry with natural

[For full version visit the website](https://www.schinellaproperty.com.au)

**Type** : House  
**Price** : \$ 1,400,000  
**Building Size** : 344.26 sqm  
**Land Size** : 800 sqm  
**View** : <https://www.schinellaproperty.com.au/6302438>

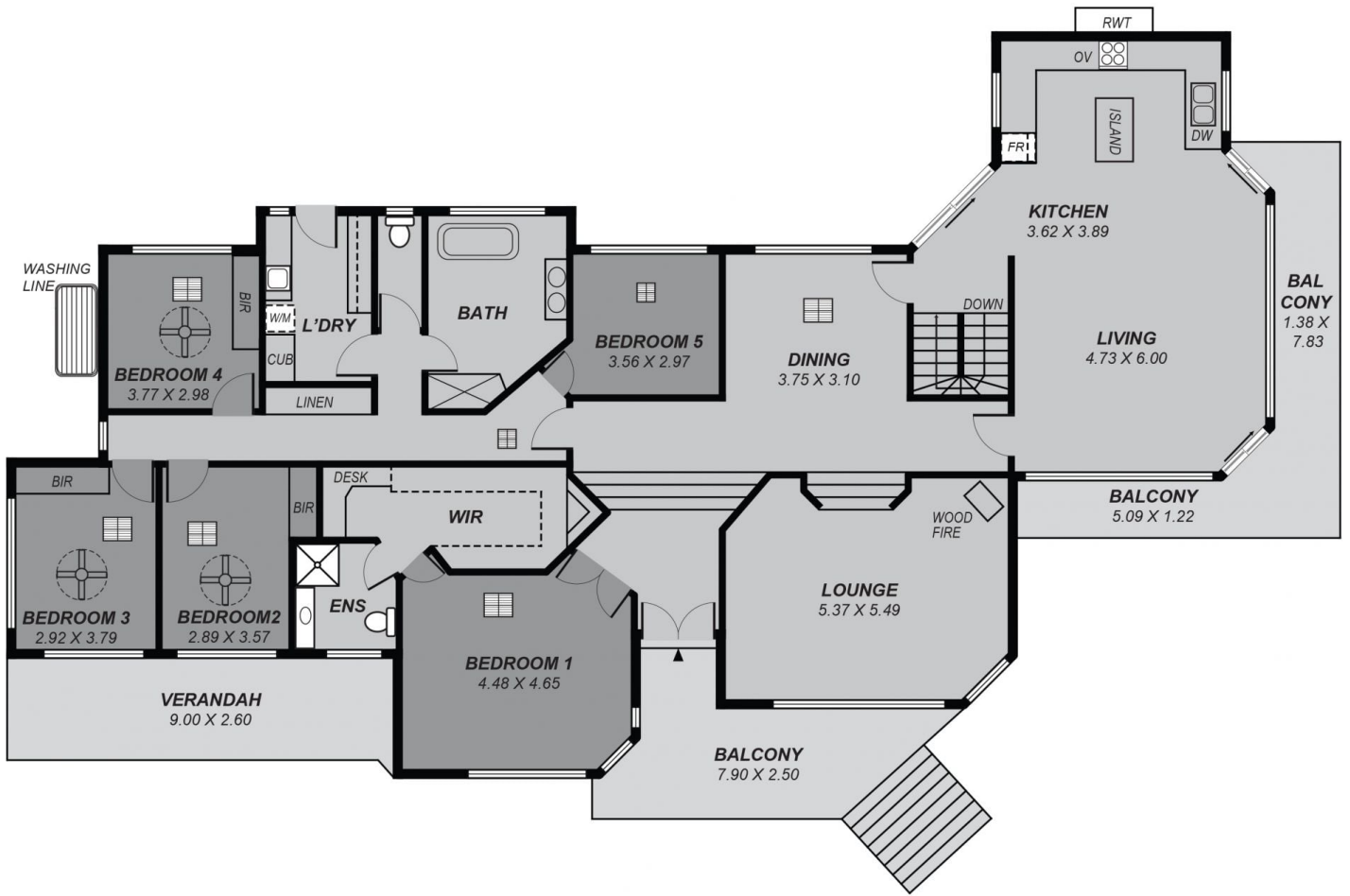


**Pat Schinella**  
08 8294 4484

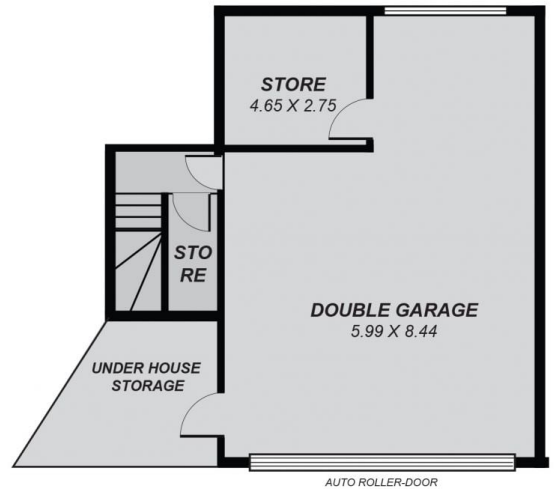


**DeArna Schinella**  
08 8294 4484

<https://www.schinellaproperty.com.au>



**LOWER LEVEL**



*This drawing is for illustration purposes only .  
 All measurements are approximate and details intended  
 to be relied upon should be independently verified.*

Area	m <sup>2</sup>
Living:	215.89
Garage:	50.56
Verandah:	23.40
Balcony:	36.77
Store:	17.84
<b>Total:</b>	<b>344.26</b>