

# SCHINELLA.



3/116 Chief Street Brompton SA

3 2 2

Positioned in this highly sought after locale, where new housing developments have transformed this ideal city fringe suburb into one of Adelaide's residential hot spots!

2016 built, this contemporary townhouse offers great low maintenance living.

Designed with style and class, the entrance of this home leads to the light and bright living area which features the open plan kitchen, dining and lounge. The modern kitchen includes stone bench tops and stainless steel appliances; dishwasher, 900mm oven with gas cook top and range hood. With glamorous porcelain floors, the hub of this home opens out to the landscaped courtyard with undercover outdoor entertaining to enjoy.

**Type** : House  
**Building Size** : 196 sqm  
**View** : <https://www.schinellaproperty.com.au/6302435>



**Marco Schinella**  
08 8294 4484

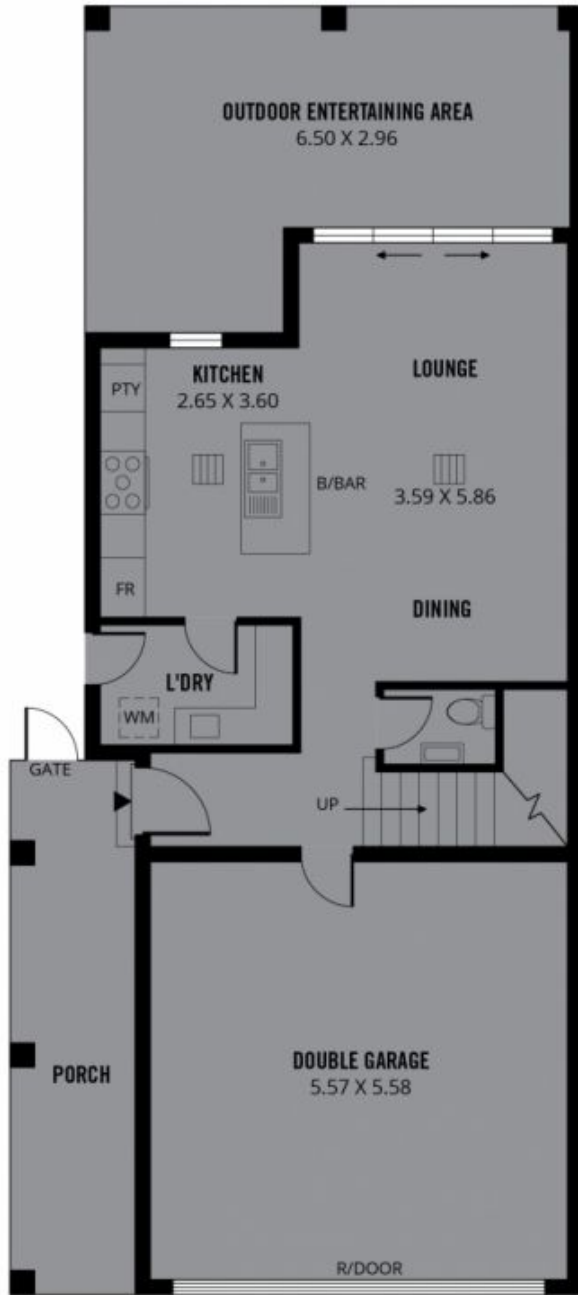


**DeArna Schinella**  
08 8294 4484

[For full version visit the website](https://www.schinellaproperty.com.au)

<https://www.schinellaproperty.com.au>

RWT



GROUND FLOOR



FIRST FLOOR



196m<sup>2</sup>

TOTAL



123m<sup>2</sup>

Living



7m<sup>2</sup>

Balcony



31m<sup>2</sup>

Garage



12m<sup>2</sup>

Porch



23m<sup>2</sup>

Entertaining Area



Scale in metres. This drawing is for illustration purposes only. All measurements are approximate and details intended to be relied upon should be independently verified.

Produced by The Fotobase Group